



A train enters the profiling and veneering station near Jondaryan.

NEW HOPE ACTS OVER COMMUNITY CONCERNS

COAL TRAIN WAGONS LEAVING NEW ACLAND'S RAIL LOADING FACILITY AT JONDARYAN ARE NOW BEING VENEERED TO PHYSICALLY PREVENT POTENTIAL DUST BEING RELEASED.

The million dollar veneering station uses the latest computer technology to level each load before it is coated with the water soluble veneer.

New Acland General Manager Jim Randell said the initiative was in response to recent community concerns about the potential for dust from coal wagons.

"This is despite independent testing showing that dust levels from coal trains meet strict government requirements," he said.

"The veneering solution is an environmentally-friendly mixture which is sprayed onto the top of the load and then dries to form a flexible crust over the coal, physically preventing dust from being released from the wagons.

"The new facility near Jondaryan also has the ability to sweep clean the sills of each wagon, so it really is an example of best practice for the industry."

The profiling and veneering began in early May, following two months of

dust monitoring along the western rail corridor at seven sites to provide baseline dust measurements.

The monitoring is independently conducted by the Environmental Monitoring and Assessment Sciences Branch of the Department of Science, Information Technology, Innovation and the Arts (DSITIA) at sites at Oakey, Toowoomba, Ipswich, Tennyson, Fairfield, Coorparoo and Chelmer.

"The profiling and veneering began in early May, following two months of dust monitoring"

As part of the revised New Acland Coal Mine Stage 3 proposal, the Jondaryan rail loading facility will be moved eight kilometres onto a remote section of mining lease area. The new loading facility will also feature a veneering station.

Pg2 No Mining Within 10kms Of Oakey

Pg2 Acland's Coal Mining Centenary

Pg2 Revised Project Timeline

Pg3 Acland Pastoral Welcomes New Apprentice

Pg3 New Hope Has Kindy Kids Covered

Pg3 Community Information Centre Celebrates

Pg4 New Hope Oakey Street Sprints

Pg4 Vinnies Community Sleepout

Pg4 Brymaroo Kicks Up Its Heels

TRC ANNOUNCEMENT WELCOMED

The New Hope Group welcomes the opportunity to participate in the Toowoomba Regional Council's assessment of the rail loading facility near Jondaryan, announced last month.

New Hope meets strict environmental conditions in relation to its operations at Jondaryan and all of its sites, plus our dust monitoring equipment is some of the most highly sensitive and sophisticated in the country.

The Jondaryan rail loading facility will be moved eight kilometres onto a remote section of mining lease area, as part of the revised New Acland Coal Mine Stage 3 proposal.

NEW ACLAND FAST FACT

The revised New Acland Coal Mine Stage 3 Project plan reduces the amount of land disturbed for mining activities by more than half, from the original Stage 3 proposal.

Find out more at
www.aclandproject.com.au

NO MINING WITHIN 10 KMS OF OAKEY

COAL MINING WILL NOT COME WITHIN 10 KILOMETRES OF OAKEY UNDER THE REVISED NEW ACLAND COAL MINE STAGE 3 PROJECT PLAN.

This puts operations a further three kilometres away from Oakey than was planned in the original Stage 3 proposal.

New Hope's Chief Operating Office Bruce Denney said that

at this distance, scientific modelling showed there would be no environmental impact on the township.

"From the original proposal, there will be an overall reduction in the amount of land used for mining activities by about half.

"Under the revised Project the Acland town area, including Tom Doherty Park, the War Memorial and the Acland No2

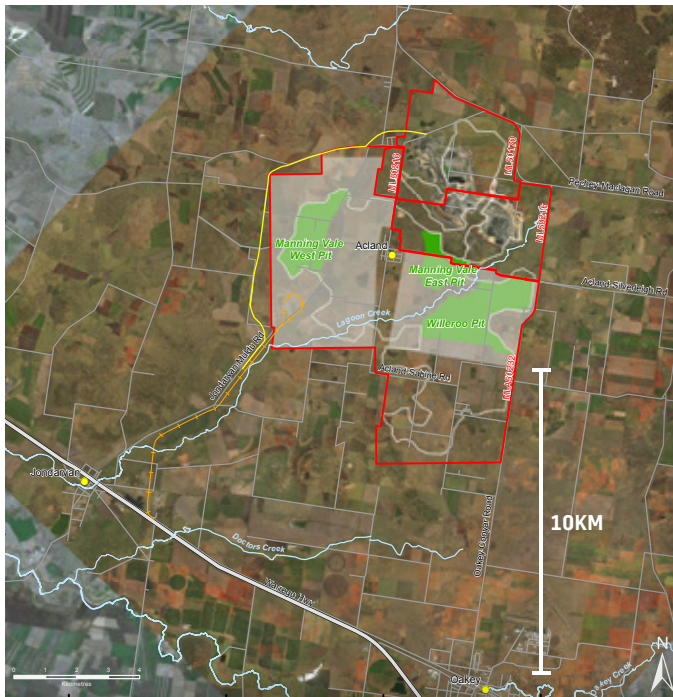
Colliery, will be left in place," Mr Denney said.

The revised Project plan also ensures that the Jondaryan Rail Loading Facility will be moved eight kilometres away from the township onto a remote section of mining lease area, and that Lagoon Creek will not be diverted.

Mr Denney said the significantly revised version of the New Acland Project had

been developed in consultation with stakeholders and the wider community, addressing and compromising on issues of concern from the original proposal.

Community feedback on the revised Project is encouraged. Please visit our Community Information Centre in Campbell Street, Oakey, or go to www.aclandproject.com.au for more information.



REVISED PROJECT TIMELINE

ACTIVITY	ANTICIPATED TIMEFRAME
Draft Terms of Reference (ToR) released for public consultation	1 December 2012–4 February 2013
Final ToR released	March 2013
Draft EIS released for public consultation	2013
Coordinator-General's report completed	2014
State and Federal Ministers' decisions	2014
Construction (if approved)	Between 2015 & 2017

ACLAND'S COAL MINING CENTENARY

THIS YEAR MARKS 100 YEARS SINCE COAL MINING COMMENCED IN ACLAND WITH THE FIRST MINING SHAFT SUNK IN 1913.

The history of coal mining in the areas surrounding Oakey is even older, dating back to the 1880s.

Coal mining developed significantly in the district during the 1920s with the product sold mainly to Queensland Railways for use in locomotives.

Other customers included hospitals in Oakey and Toowoomba, the Toowoomba Gas Company, an abattoir, brick works and cheese factories in the local area.

Coal mining guaranteed the fortunes of the Acland township for half a century but its population began to steadily decline in the 1960's with the closure of a number of collieries.

The town suffered a further setback with the closure of the railway line from Oakey to Acland in 1969.

When the last Acland underground mine, known as

the Acland No2 Colliery, closed in 1984 the mine structures were bought by Kath and John Greenhalgh, the owners of the farm on which the mine was located.

Kath and John had moved to Acland in 1973, became interested in the history of the area, and ran the Acland Mining Museum until they retired in 2000.

"The railway line came to Acland in 1912 and it then gradually became a town as the mine built or brought in houses for the manager, the electrician and others," Kath said.

BELOW: The old Acland No2 Colliery will be left in place under the revised Project.





ACLAND PASTORAL WELCOMES **NEW APPRENTICE**

THE ACLAND PASTORAL COMPANY (APC) HAS HIRED ITS FIRST SCHOOL-BASED RURAL APPRENTICE, CHLOE GORDON.

Chloe, 17, spends two days a week at Acland as part of her year 12 studies.

"I love it," Chloe said. "Working here at APC is even better than I thought it would be.

"After being here for a few months I've decided that I'd really

like to work on cattle properties and stations in the future."

Chloe credited APC Manager Ben Muirhead and Assistant Manager Michael Laird with helping her learn a lot in such a short time about managing cattle and the land.

"I've learnt a lot about things like fencing and how to look after the land properly. They are a really good bunch of people here and everyone is always really helpful," she said.

Chloe's mother Kaylie Gordon said she was really happy with Chloe's development while working at APC.

"I'd really like to work on cattle properties"

"Ben and Michael are showing Chloe the ropes and they are treating her really well. They go out of their way to help her."

Ben said APC's school-based apprenticeship program offered young locals the chance to break into the agriculture industry.

"New Acland has trainee, apprenticeship and graduate positions in many areas of work at the mine, plus vacation student positions – but this is the first expansion into the rural side of the business and we hope it is the first of many more to come," he said.



NEW HOPE HAS **KINDY KIDS COVERED**

Kids at the C&K Oakey Community Preschool and Kindergarten are now enjoying an outdoor play area in shaded comfort, thanks to a donation from the New Hope Group.

"This new shaded area is an important part of our outdoor learning area and is

used constantly by the kids," kindergarten teacher and director Janette Quince said.

"The shade sail allows us to use the stage area for performances and also as a meeting area, so it has made it a lot more versatile and a much better use of our resources.

"We couldn't have done this without New Hope's help, so we are very, very grateful."

COMMUNITY INFORMATION CENTRE **CELEBRATES**

The New Hope Group recently celebrated the first anniversary of its Community Information Centre in Oakey.

In the past year, almost 750 people visited the centre in Campbell Street.

New Hope's Community Liaison Officer Helen Braithwaite said the centre was a great way to share all kinds of information with local people and visitors to the region.

"For example, if anyone has any questions about where the Revised New Acland Coal Mine Project is at, they can come in



and find out all about it here," she said.

Helen said half of the visitors coming in to the centre in the past year had done so to ask about employment opportunities with New Acland.

"Less than one percent of visitors made an official complaint about the mine operations, although many visitors did want more information, which is why we are here."

SUN SHINES ON NEW HOPE OAKEY STREET SPRINTS

The combination of perfect weather and a new format saw large crowds flock to the New Hope Oakey Street Sprints.

Toowoomba Regional Council Mayor Paul Antonio officially opened the Sprints, which this year featured a new two-lap format.

The New Hope Group became the major sponsor of the event this year, which featured not

only the Street Sprints but a show'n'shine competition, drifting displays and a burn out competition.

The Oakey Bears New Hope Group marquee was well attended throughout the weekend with the shaded viewing area proving a popular vantage point for all the action.

Just a reminder that community groups can borrow New Hope's 8m by 4m marquee free of charge by contacting Helen at the New Hope Community Information Centre on 4691 3445 or just pop in when next you're in town.



The New Hope Oakey Street Sprints are getting bigger and better each year.



VINNIES COMMUNITY SLEEPOUT

New Hope employees, suppliers and contractors raised thousands of dollars to support New Acland's Jim Randell and David Wood in the Vinnies Community Sleepout held in Toowoomba last month.

As part of the fundraising drive, New Acland held a special fundraising breakfast event in the

Acland Hall which boosted the New Hope Group tally. All funds raised went to the St Vincent de Paul Society's homelessness programs.

Thanks to everyone who chipped in to help pass our target of \$5,000 – which meant Jim had to honour his promise to wear this eye-catching ensemble.

NEW ACLAND FAST FACT

Any mining operations will be located at least 10km away from Oakey under the revised New Acland Coal Mine Stage 3 Project plan.

Find out more at
www.aclandproject.com.au



BRYMAROO KICKS UP ITS HEELS

The Brymaroo rodeo and campdraft events are known for their friendly atmosphere and are growing in size and reputation each year.

A number of New Hope employees were involved in both the campdraft and the rodeo - either as members of the hard-working committee, or volunteering on the bar and barbecue, plus many other jobs over the two weekends.

New Hope's Acland Pastoral Company also supplied the cattle for the campdraft and the competitors were impressed with the quality of the stock.

Spectator numbers were well up on last year and the Quinalow and Bowenville School P&C's reported a roaring trade at their food and drink stalls.

LEFT: The Brymaroo Rodeo was action-packed.

CONTACT

- ▶ Freecall 1800 882 142
- ▶ PO Box 47, Ipswich, Qld 4305
- ▶ community@newhopegroup.com.au
- ▶ www.aclandproject.com.au
- ▶ New Hope Community Information Centre, Campbell St, Oakey



New Hope has prepared this newsletter to keep the community informed about the New Acland mine operations and initiatives.

