

WEST MUSWELLBROOK (AL19)

EXPLORATION COMMUNITY CONSULTATION STRATEGY

Title Block

Name of Exploration Program	West Muswellbrook
Document Title	Exploration Community Consultation Strategy
Licence Number	Assessment Lease 19
Grant Date	6 October 2021
Expiry Date	9 September 2026
Location	Muswellbrook Shire Council and Upper Hunter Shire Council Local Government Areas
Project Operator	New Hope West Muswellbrook Pty Ltd ACN 127 222 557
Author	F. Bailey (James Bailey and Associates)
Community Consultation Strategy Revisions	
Version	Date
1.0	6 March 2024
2.0 (PUBLIC VERSION)	16 May 2024
Nominated Contact Person	Christie Dunstan

Please note that the public version of the document has sensitive contact information removed.

CONTENTS

1. INTRODUCTION	3
1.1 Background	3
1.2 Exploration Program	3
1.3 Document Purpose	3
1.4 Document Structure	3
2. STATUTORY CONTEXT	6
2.1 Mining Act	6
2.2 Exploration Licence	6
2.3 Community Consultation Code of Practice	6
3. COMMUNITY CONSULTATION RISK ASSESSMENT	7
4. ACTIVITY IMPACT ASSESSMENT	7
5. CONSULTATION STRATEGY	7
5.1 Consultation Objectives	7
5.2 Stakeholder Identification	8
5.3 Consultation Plan and Landholder Liaison Program	12
6. MONITORING REVIEW & REPORTING	14
6.1 Record Keeping	14
6.2 Community Enquiries and Complaints	14
6.3 Strategy Review	15
6.4 Environmental Incident Notification	15
6.5 Annual Reporting	15
6.5.1 Annual Activity Reporting	15
6.5.2 Annual Community Consultation Reports	15
7. ROLES AND RESPONSIBILITIES	16
8. REFERENCES	18
9. ABBREVIATIONS	19

FIGURES

Figure 1-1: Regional Locality	5
Figure 5-1: Key AL19 Stakeholders	8
Figure 5-2: Landownership Plan	11

TABLES

Table 5-1: Likely Areas of Concern for Stakeholder Groups	8
Table 5-2: Consultation Methodology for 'Low Impact' Activity	13
Table 7-1: Responsibilities for Implementation of the Consultation Strategy	17

APPENDICES

Appendix A	Exploration Risk Assessment
Appendix B	Landownership Register

APPENDICE TABLES

Table A-1: Risk Assessment	21
Table B-1: Landownership Register	23

1. INTRODUCTION

1.1 Background

Assessment Lease 19 (AL19) was transferred in February 2024 to New Hope West Muswellbrook Pty Ltd (NHWM), a wholly owned subsidiary of New Hope Corporation Limited (New Hope Group/NHG). AL19 is located west of the township of Muswellbrook NSW in the Hunter Valley Coal Fields. AL19 falls within both the Muswellbrook Shire and the Upper Hunter Shire Local Government Areas (LGAs). The location of AL19 is illustrated in **Figure 1-1**.

NHG is an Australian coal producer with associated port, oil and gas, and agricultural operations. NHG operates the Bengalla Mine in New South Wales under a Joint Venture (Bengalla Mining Company) between NHG (80%) and Taipower (20%) and the New Acland Mine in southeast Queensland, with coal primarily exported to customers in Asia.

NHG has acquired AL19 to investigate potential development opportunities because of its proximity to its existing mining operations at Bengalla Mine and associated agricultural enterprises. The potential development of AL19 also aligns with the NHG strategy of safely, responsibly, and efficiently operating low-cost, long-life coal assets.

AL19 was previously held by Muswellbrook Coal Company Ltd (MCC). MCC originally held two Exploration Licences (ELs) from 1998 over the Rosehill and Castlerock areas (EL5431 and EL5600 respectively). The Rosehill EL (EL5431) initially covered an area extending further to the north, closer to the township of Scone, however this area was reduced in 2000 following an exploration drilling program which identified limited viable coal resources in this area.

MCC actively investigated the feasibility of a stand-alone open cut coal mine within the open cut prospect area, which was located largely in the north-eastern section of its existing ELs. In late 2008, MCC submitted an AL application to retain mining title over areas that may be required for a potential open cut mining project. AL19 was issued to MCC on 9 September 2009.

1.2 Exploration Program

NHG seeks to further identify and assess coal prospects with AL19. In the short-term, the proposed exploration program will involve reviewing existing geological information to determine the potential of the area for economical coal extraction and, if appropriate, progress the area or part thereof to the 'Australasian Code for Reporting of Exploration Results, Mineral Resources and Ore Reserves' (Joint Ore Reserves Committee, 2012) (JORC) 'Indicated Mineral Resource' and 'Probable Ore Reserve' status as well as undertaking conceptual mine planning work. This initial review work will be undertaken over a 12 – 18 month period.

1.3 Document Purpose

This Exploration Community Consultation Strategy (Consultation Strategy) has been prepared by James Bailey & Associates Pty Limited (JBA) on behalf of NHG to satisfy the requirements of the 'Exploration Code of Practice: Community Consultation' (NSW Department of Regional NSW - Mining, Exploration and Geoscience, 2023 (the Code 2023)). This document aims to identify consultation requirements and assess the opportunities and potential threats associated with community consultation and engagement for AL19.

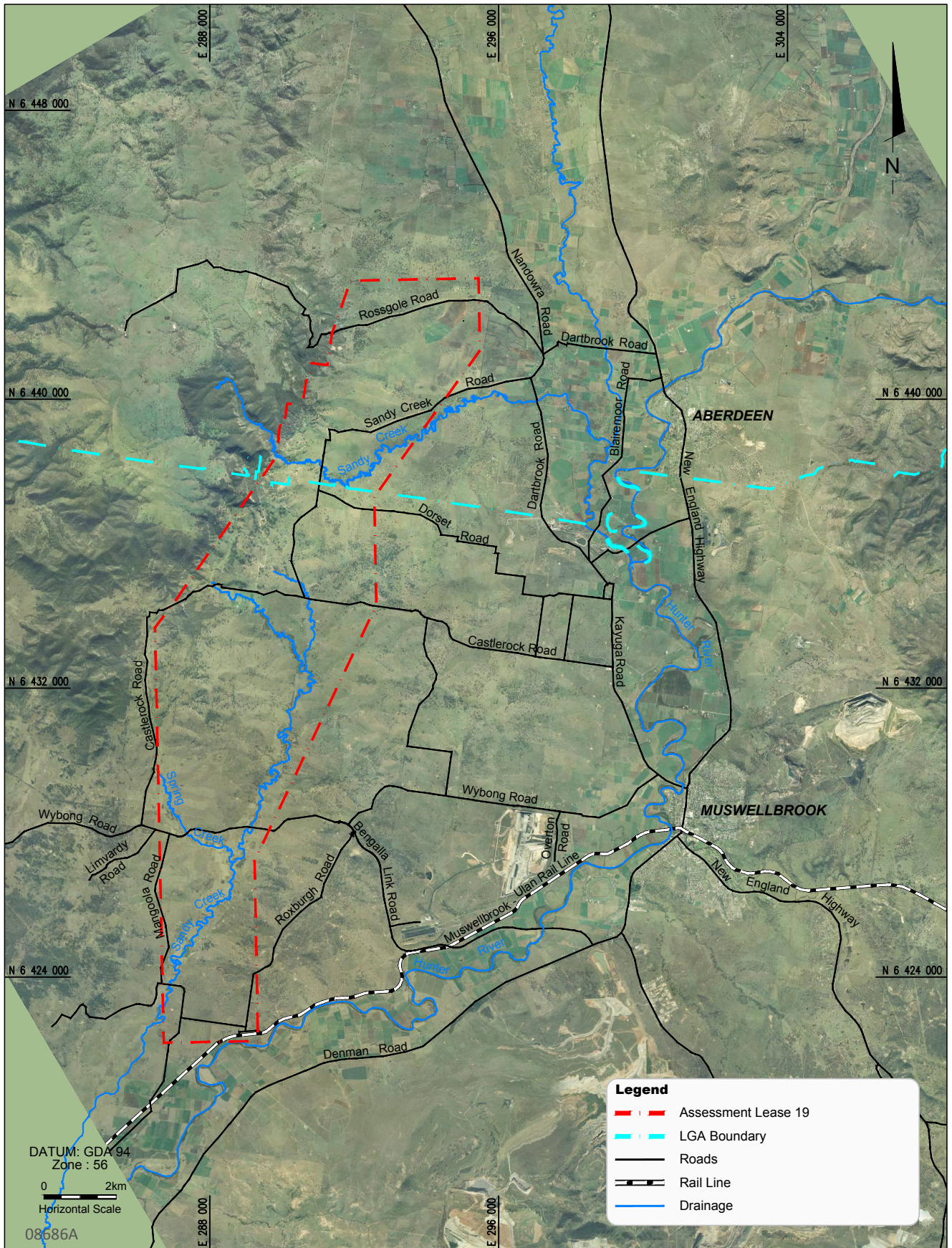
1.4 Document Structure

This document is structured as follows:

- **Section 2** provides an overview of the statutory context relevant to the proposed exploration activities and community consultation requirements;

- **Section 3** includes a summary of the risk assessment undertaken to assess the potential threats associated with community consultation and engagement as well the range of management measures and opportunities required to mitigate or manage identified risks;
- **Section 4** provides an activity impact assessment in accordance with the Code 2023, to determine the scope and consultation requirements relevant to this activity;
- **Section 5** outlines the consultation objectives, stakeholder identification and consultation plan relevant to the activity impact level;
- **Section 6** identifies the record keeping, monitoring, review and reporting requirements;
- **Section 7** provides a summary of responsibilities; and
- **Section 8** includes a list of references relevant to this document.

PUBLIC DOCUMENT



WEST MUSWELLBROOK

Regional Locality

FIGURE 1

2. STATUTORY CONTEXT

2.1 Mining Act

In accordance with the conditions of AL19, an exploration activity approval must be obtained prior to carrying out any 'Assessable Prospecting Operation' in accordance with Section 23A of the Mining Act 1992 (Mining Act).

An application to undertake Assessable Prospecting Operations will be submitted via the NSW Resources Regulator Portal prior to undertaking any exploration activities that are not deemed 'exempt development', as required.

Exempt development applies to certain exploration activities with minimal environmental impact, as defined under the State Environment Planning Policy (Resources and Energy) 2021 (Resources and Energy SEPP). Under Section 2.13 of the Resources and Energy SEPP, the following exploration activities are exempt development:

- (b) *low intensity activities associated with mineral exploration or petroleum exploration, including the following—*
 - (i) *geological mapping and airborne surveying,*
 - (ii) *sampling and coring using hand-held equipment,*
 - (iii) *geophysical (but not seismic) surveying and downhole logging,*
 - (iv) *accessing of areas by vehicle that does not involve the construction of an access way such as a track or road.*

All other exploration activities require further approval from the Minister (or delegate), as an 'Assessable Prospecting Operation'.

2.2 Exploration Licence

NHG must conduct exploration activities in accordance with the requirements of AL19. In accordance with General Condition 2 of AL19, NHG must 'carry out community consultation in relation to the planning and conduct of activities under this licence in accordance with the Exploration Code of Practice: Community Consultation (March 2016)', now the Code 2023. This Consultation Strategy has been prepared to satisfy the Code 2023 which requires:

- A risk assessment (**Section 3**);
- Stakeholder Identification (**Section 5.2**); and
- Minimum Consultation Requirements (**Section 5.3**).

2.3 Community Consultation Code of Practice

The Code 2023 notes that a community consultation strategy must include:

- A Risk Assessment (**Section 3**);
- Established objectives for consultation (**Section 5.1**);
- A description and analysis of potential community stakeholders (**Section 5.2**);
- A description of how community consultation will be undertaken (**Section 5.3**);
- An outline of the methods for revision of the strategy (**Section 6.3**);

- Annual reporting requirements (**Section 6.5**); and
- Record keeping requirements (**Section 6.1**).

3. COMMUNITY CONSULTATION RISK ASSESSMENT

NHG completed an exploration risk assessment to consider a range of factors relevant to the proposed exploration program including environmental aspects, community engagement and rehabilitation. The risk assessment is included in **Appendix A**.

The risks, impacts, controls and treatments for appropriate, adequate and inclusive consultation were assessed relative to the proposed Exploration Program, which will primarily involve a desktop review of existing geological data during this phase.

The Risk Assessment will be updated prior to any exploration activities not deemed as 'exempt' under the Resources and Energy SEPP and reviewed at each exploration stage.

An ongoing assessment of the effectiveness of risk controls, as well as the emergence of any new risks, has been incorporated into the review and reporting requirements outlined in this Consultation Strategy (**Section 6**).

4. ACTIVITY IMPACT ASSESSMENT

The potential impact level of the proposed exploration program has been assessed in accordance with Table 2 Activity Impact Assessment Tool of the Code 2023. The score which has been applied to each risk area for the activity has resulted in a cumulative impact score of 5 which is considered a 'low impact activity' under the Code 2023.

5. CONSULTATION STRATEGY

5.1 Consultation Objectives

NHG aims to be a responsible neighbour that makes a positive contribution to the Upper Hunter community through open, transparent, and respectful engagement. NHG believes companies that responsibly manage operational impacts on the environment, people and communities are the most appropriate to produce the coal that will be required through the energy transition.

NHG endeavours to maintain good relationships with government agencies, other stakeholders, and the local community. NHG's community liaison objectives are to:

- Engage with stakeholders to develop meaningful relationships and outcomes through consultation and collaboration;
- Proactively work to understand, assess, and manage environmental risks to prevent and reduce potential impacts on our surroundings;
- Establish a process for consistent, proactive open and honest, two-way engagement with our stakeholders;
- Ensure stakeholders are aware of how to contact NHG and obtain information about the exploration program;
- Build awareness and provide information on current and future plans;
- Work closely with landholders and the wider community to keep stakeholders well informed;
- Understand and address any concerns held by residents and other stakeholders where appropriate; and
- Minimise any potential disruptions and inconvenience to residents and business operations.

5.2 Stakeholder Identification

The broad community stakeholder groups identified for AL19 are illustrated in **Figure 5-1**.

Figure 5-1: Key AL19 Stakeholders



Table 4 in the Code 2023 outlines the minimum consultation requirements for identified community stakeholders in accordance with the defined activity impact level. As the proposed activity is designated as low impact, consultation is recommended with the following stakeholders:

- Landholders and residents/tenants encumbered by AL19;
- Native Title holders or claimants;
- Local Government, including Muswellbrook Shire Council and the Upper Hunter Shire Council; and
- Any other relevant stakeholders who make an enquiry.

An initial stakeholder list has been identified for the current phase of the exploration program, with relevant groups listed in **Table 5-1**. Landownership relevant to AL19 is shown on **Figure 5-2**, whilst the ownership, contacts and land parcel details are provided in **Appendix B**.

Table 5-1: Likely Areas of Concern for Stakeholder Groups

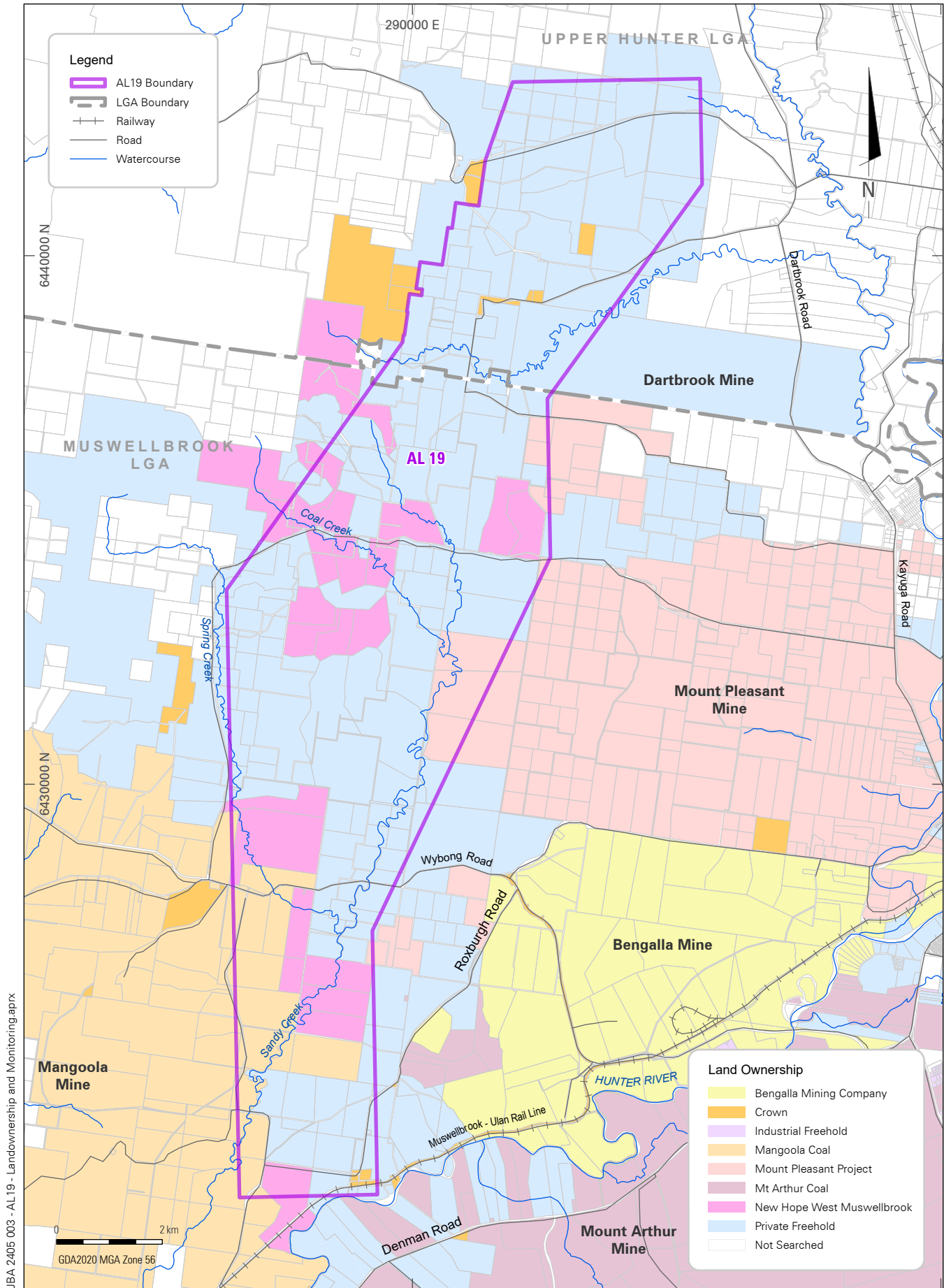
Category	Stakeholder	Likely Areas of Concern
Landowners, residents and tenants within AL19 area	Approximately 212 land parcels and 54 landowners / residents within AL19 (refer to Appendix B).	Land Access Agreements and Residual impacts

Category	Stakeholder	Likely Areas of Concern
Local Councils	Muswellbrook Shire Council (Ph: 6549 3700) Upper Hunter Shire Council (Ph: 6540 110)	Community enquiries, Residual impacts
State Government Agencies	Department of Regional NSW, Mining Exploration and Geosciences PO Box 244, Hunter Regional Mail Centre NSW 2310 Email: titles@regional.nsw.gov.au Phone: 4063 6600	Title enquiries
Neighbouring Industry	Dartbrook Mine (Australian Pacific Coal), Ph: Mt Pleasant Mine (MACH Energy), Ph: Bengalla Mine (Bengalla Mining Company – New Hope Group), Ph: Mt Arthur Coal (NSW Energy Coal – BHP), Ph: Muswellbrook Coal (Idemitsu), Ph: Mangoola Coal (Glencore), Ph:	Land Access Agreements and Residual impacts
Nearby Town Centres/ Wider Community	Muswellbrook Aberdeen Wybong / Castlerock / Kayuga Scone Denman	Community enquiries
State and Federal Government Representatives	NSW Member for Upper Hunter Email: upperhunter@parliament.nsw.gov.au Phone: Federal Member for the New England – Phone: NSW Minister for Natural Resources – Phone	Community enquiries
Wanaruah Local Aboriginal Land Council	Email: admin@wanaruahlandcouncil.com.au Phone: Address:	Community enquiries Aboriginal and Cultural Heritage
First Nations Groups	Registered Native Title Claimants	Community enquiries Aboriginal and Cultural Heritage Native Title
Media	Television, Radio, Newspaper, Internet forums, Social media	Community interest
Local Businesses/ Suppliers	Muswellbrook Chamber of Commerce, local mine related businesses, suppliers and contractors	Business and supplier enquiries

Category	Stakeholder	Likely Areas of Concern
Linear Infrastructure Providers	Telecommunications, power reticulation and local road network owners	Impact or interruption to services
Other	Business Organisations, Community Groups/ Non-Government Organisations and Special Interest Groups	Community interest

Please note that the public version of the document has sensitive contact information removed.

PUBLIC DOCUMENT



JBA 2405 003 - AL19 - Landownership and Monitoring.aprx

ASSESSMENT LEASE 19

West Muswellbrook Land Ownership

FIGURE 3



5.3 Consultation Plan and Landholder Liaison Program

In accordance with Additional Condition 9 of AL19, upon the grant of the lease, the leaseholder is required to establish a Landholder Liaison Program, which must include procedures for addressing all landholder inquiries. The consultation plan described below is intended to fulfil this requirement.

The proposed exploration activity has been assessed as a 'low impact activity' (see **Section 4**), and hence community consultation actions that are mandatory under the Code 2023 include responding to correspondence or submissions received from stakeholders and holding meetings / interviews with key individuals or group representatives. Given that NHG are new Authority holders in the area, the following activities will be undertaken to inform the landholders of proposed activities:

- Distribution of letters to relevant stakeholders within AL19 notifying of the lease transfer and any intended exploration activities;
- Update of the company website to include information regarding the AL19 exploration program;
- Notification of the contact details and a direct community enquiry telephone number, available during business hours; and
- Response to verbal and written enquiries and/or queries.

A community consultation plan has been developed and is provided in **Table 5-2**.

Stakeholders will be provided with sufficient information to understand the nature of the activities, and the impacts that may be associated with the exploration program. They will be informed of the proposed schedule for implementing the exploration program prior to commencement of physical exploration activities.

Should any stakeholders raise any concerns or enquiries, appropriate feedback and actions will be implemented by NHG to respond, where reasonable and feasible. Any feedback will be recorded in accordance with **Section 6.1**.

The main contact point for enquiries relating to AL19 will be the NHG Corporate office as detailed in **Section 6.2**. It is noted that some local stakeholders may have existing relationships with personnel at the nearby Bengalla Mine. If preferred, those stakeholders may liaise directly with Bengalla Mine and any communications will be recorded and forwarded onto NHG for response.

Table 5-2: Consultation Methodology for ‘Low Impact’ Activity

Stakeholder Group	Purpose	Consultation Method	Timing
Muswellbrook Shire Council and Upper Hunter Shire Council	Advise about the transfer of AL19 and the proposed limited activities, should they receive any community enquiries	Letter/email to advise of proposed activity and key details, including: <ul style="list-style-type: none"> Nature of activities (limited) Proposed commencement and duration Contact details 	Following transfer of AL19 and prior to commencing physical exploration program
Landholders/ tenants within AL19	Inform about the lease transfer and introduce company	Letter/ email notifying residents of AL19 transfer and introduction to the NHG. Provide NHG contact details.	Following transfer of AL19
	Negotiate Land Access Agreement where required	Face to face meetings and written correspondence as required	Prior to accessing land
	Advise about the proposed activity	Letter/email to advise of proposed activity and key details including: <ul style="list-style-type: none"> Nature of activities Proposed commencement and duration 	Prior to commencing physical exploration program / surface disturbance activities
Landholders, residents and businesses within 5 km of the operational area.	Discuss any issues raised	Respond to enquiries through face to face meetings, telephone and/or written correspondence, as required	As requested
All stakeholders	Respond to any enquiries & complaints received	Complaints and/ or enquiries regarding the proposed activity may be received via the NHG Contact Line: (07) 3108 3611 landandtenures@newhopegroup.com.au	Ongoing / as required
	Inform the public via the Project Website	Maintain information on the company website about the exploration program and provide contact details.	Ongoing

6. MONITORING REVIEW & REPORTING

6.1 Record Keeping

NHG will maintain the following records for the exploration program:

- A copy of this Consultation Strategy;
- Details of the community stakeholders as identified in **Section 5.2** and **Appendix B**;
- Details of any consultation activities undertaken as described in **Section 5.3**; and
- Any feedback, enquiries or complaints and how these were responded to.

NHG should keep a record of the following:

- At what stage(s) of the exploration program that the community was engaged;
- How the community was involved and the methods of engagement used;
- What the community consultation program(s) expected to achieve;
- Details of feedback provided to the community and other relevant stakeholders following enquiries, as a result of the activities undertaken; and
- How the consultation procedures or processes have been amended, if required.

6.2 Community Enquiries and Complaints

Enquiries and complaints regarding the proposed activity may be received via the NHG telephone line on (07) 3108 3611 or email landandtenures@newhopegroup.com.au

The following procedure will be applied for any complaints received:

1. Record the complaint;
2. Acknowledge the complaint to the complainant;
3. Investigate and assess the nature and cause of the complaint;
4. Implement any actions required to address the complaint; and
5. Provide a response to the complainant within a mutually agreed timeframe.

NHG will maintain a record of all community complaints and subsequent actions. The following details will be recorded:

- The date and time of the complaint;
- Complainant details (where provided);
- The nature of the complaint or enquiry;
- How the complaint was made;
- Actions taken (if appropriate); and
- Follow-up consultation undertaken with the complainant.

A register of complaints will be maintained by NHG, as required, for reporting within the AL19 Annual Community Consultation Report (Consultation Report).

6.3 Strategy Review

This Consultation Strategy will be reviewed, and updated if required in accordance with the following triggers:

- Following a significant incident associated with the exploration program;
- If the nature of exploration activities changes;
- If significant public concern or complaints are raised about the exploration program;
- Submission of a new or revised Work Program (Currently approved Work Program identified as WP-AL19-2023-6);
- During the preparation of an Assessable Prospecting Operations Approval Application;
- If any significant emerging issues are identified during the Annual Activity Reporting; and / or
- If consultation, as identified through the consideration of the Consultation Report, is deemed to be inadequate.

6.4 Environmental Incident Notification

NHG will notify the relevant agencies of any reportable environmental incidents, in accordance with their respective requirements. The Secretary of the Department of Regional NSW will be notified no later than 7 days after those notifications and reports are provided to relevant authorities, as required by General Condition 6 of AL19.

6.5 Annual Reporting

6.5.1 Annual Activity Reporting

In accordance with General Condition 7 of AL19, NHG will submit an Annual Activity Report consistent with the Exploration Guideline: Annual Activity Reporting for Prospecting Titles (Mining, Exploration and Geoscience, 2022). The Annual Activity Report will provide details of the exploration, environmental management and rehabilitation activities carried out during the previous year within AL19. Annual activity reporting requires the submission of two documents, being an:

1. Annual Exploration Report, and (if applicable) geoscientific data, submitted to the Geological Survey of NSW via Titles Management System; and
2. Annual Environmental Management and Rehabilitation Compliance Report, submitted to the NSW Resources Regulator via the Resources Regulator Portal.

The Annual Activity Report will be submitted annually within one calendar month following the grant anniversary date of AL19 (by 6 November). An Annual Activity Report is also required to be prepared within one month of the cancellation or expiry of AL19 or as otherwise directed in writing by the Secretary of the Department of Regional NSW.

6.5.2 Annual Community Consultation Reports

In accordance with Appendix 2 of the Code 2023, NHG will prepare a Consultation Report describing community consultation associated with AL19 exploration activities. Community Consultation Reports will be published on the NHG website within two calendar months following the grant anniversary date of AL19 (by 6 January).

Consultation Reports will be prepared in accordance with the requirements of the Code 2023. Where there is no or limited ongoing exploration activities undertaken, a Reduced Consultation Report can be made publicly available, providing the report indicates the reason for the reduced level of consultation.

As the proposed exploration activities are deemed to be low impact, it is likely that only a Reduced Consultation Report will be required for the current exploration program.

The reduced Community Consultation Report will detail any consultation undertaken associated with exploration activities, including:

- Community consultation undertaken during the reporting period;
- Reason for reduced consultation undertaken during the reporting period (if applicable);
- Response to any issues raised; and
- A summary and nature of complaints received and actions taken to address the complaints.

Additional information required in a full Consultation Report includes:

- An Executive Summary, which provides an overview of the consultation and outcomes achieved during the period;
- Further detail of community consultation undertaken during the reporting period, including the stakeholder groups identified, summary of consultation activities, objectives of consultation events and a summary of what was discussed, outcomes achieved and issues raised;
- Consideration of compliance with the Consultation Strategy and Community Consultation Plan (if relevant);
- How feedback was collected;
- Summary of comments received in relation to the exploration activity;
- If the Activity has been altered in response to issues raised;
- Outcomes of the consultation;
- Assessment of how well objectives were met;
- Summary of amendments to the Consultation Strategy or activity; and
- Commitments for further consultation.
- The Consultation Report will consider the privacy and confidentiality of AL19 stakeholders when determining the level of detail provided.

7. ROLES AND RESPONSIBILITIES

All employees and contractors working for NHG have specific accountabilities, including:

- Complying with relevant legislation;
- Complying with the AL19 requirements, to the extent that it applies to their work;
- Communicating any information that they become aware of in relation to environmental management; and
- Taking appropriate actions to mitigate environmental impacts, following consultation with relevant NHG environmental personnel.

Table 7-1 provides a summary of responsibilities specific to this Consultation Strategy. Responsibilities may be delegated as required.

Table 7-1: Responsibilities for Implementation of the Consultation Strategy

Title	Responsibility
NHG General Manager-	Provide adequate resources to implement the commitments in this Consultation Strategy
NHG Manager Land and Environment or delegate-	Engagement with the community and stakeholder groups as identified in Section 5 Implement, monitor, and report annually on the Community Consultation Strategy as described in Section 6
NHG Senior Land and Property Officer or delegate-	Engagement with community and stakeholder groups as identified in Section 5 Maintain the consultation records as described in Section 6.1 Receive and respond to community enquiries and complaints as outlined in Section 6.2

Please note that the public version of the document has sensitive contact information removed.

PUBLIC DOCUMENT

8. REFERENCES

- Australian Standards, (2018). *AS/NZS ISO 31000:2018 Risk Management – Guidelines*.
- NSW Department of Mining, Exploration and Geoscience, (2022). *Exploration Guideline: Annual Activity Reporting for Prospecting Titles*.
- NSW Department of Mining, Exploration and Geoscience (2022). *Exploration Code of Practice: Community Consultation*.
- NSW Department of Mining, Exploration and Geoscience, (2023). *Exploration Code of Practice: Community Consultation*.
- NSW Department of Planning – Resources Regulator, (2018). *ESG5: Assessment Requirements for Exploration Activities*.
- NSW Resources Regulator, (2021). *Exploration Code of Practice: Environmental Management*.
- NSW Resources Regulator, (2022). *Exploration Code of Practice: Rehabilitation*.
- NSW Resources Regulator, (2023). *Exploration Guideline: Application and Assessment Process for Exploration Activities*.

PUBLIC DOCUMENT

9. ABBREVIATIONS

Abbreviation	Meaning
AL19	Assessment Lease 19
AS	Australian Standards
Consultation Report	AL19 Annual Community Consultation Report
JORC	Joint Ore Reserves Committee
JBA	James Bailey & Associates Pty Limited
LALC	Local Aboriginal Land Council
LGA	Local Government Area
MCC	Muswellbrook Coal Company Ltd
MEG	NSW Department of Regional NSW - Mining, Exploration and Geoscience
Mining Act	<i>Mining Act, 1992</i>
NHWM	New Hope West Muswellbrook Pty Ltd
NHG	New Hope Group
MSC	Muswellbrook Shire Council
NGO	Non-government Organisation
NSW	New South Wales
Resources and Energy SEPP	<i>State Environment Planning Policy (Resources and Energy) 2021</i>
SEPP	State Environmental Planning Policy
The Code 2023	Exploration Code of Practice: Community Consultation 2023
UHSC	Upper Hunter Shire Council

APPENDIX A
EXPLORATION RISK ASSESSMENT

Assessment Lease (AL) 19 EXPLORATION RISK ASSESSMENT PUBLIC VERSION



Risk Category	Risk (Description/Scenario)	Cause	Preliminary Risk			Current Controls or Mitigation Strategy	Residual Risk			Tracked via which form / database	Responsible Person
			C	L	R		C	L	R		
Community	Community not adequately notified of upcoming exploration activities affecting NHG's reputation and neighbour relationships.	<ul style="list-style-type: none"> Stakeholder contact information not current or up to date. Lack of awareness/ notification may cause concern with the local community. Stakeholders are unsure of how to contact NHG to address concerns 	2	D	L5	<ul style="list-style-type: none"> AL19 Community Consultation Strategy (CCS) & Landowner Liason Program Consultation Manager database records interaction with community Detailed database created for AL19 landholdings Phone numbers on record have been utilised in prior AL19 community consultation NHG contact details to be provided in notification to residents Community Consultation Strategy (CCS) & Landowner Liason Program Complaints Procedure Annual Activity Reporting and Annual Community Consultation Reports Monitoring and Review of the Community Consultation Strategy as per Section 6 of CCS 	1	D	L2	<ul style="list-style-type: none"> Complaints Register Annual Activity Report and Annual Community Consultation Report Landownership Database (Appendix B of CCS) 	Senior Land and Property Officer or delegate
Community	Perceived or actual impacts from exploration activities are greater than expected, due to either lack of clear information being provided prior to the activity, or the actual impacts being greater than predicted.	<ul style="list-style-type: none"> Exploration Program progressed to next stage without appropriate risk assessment controls or strategies in place 	2	D	L5	<ul style="list-style-type: none"> CCS will be updated prior to the commencement of advanced stages of exploration Assessable prospecting operations and exploration licence application process Updates to approved prospecting authority work programs Annual Activity Reporting and Annual Community Consultation Reports will identify if exploration program is progressing to next stage 	2	E	L3	<ul style="list-style-type: none"> AL19 Prospecting Authority Works Program Annual Activity Report and Annual Community Consultation Report 	Senior Land and Property Officer or delegate
Community	Private information for residents is shared without authorisation	Controlled version of document is shared to public containing private contact information of NHG staff and community members	2	D	L5	<ul style="list-style-type: none"> Public version of document to be utilised in any correspondence with the public Controlled version of document is kept on controlled server at NHG 	2	E	L3	<ul style="list-style-type: none"> Annual Activity Report and Annual Community Consultation Report Landownership Database (Appendix B of CCS) 	Senior Land and Property Officer or delegate
Community	Unauthorised access of privately owned land.	Land Access Agreements not established for access to land not owned by New Hope Group, as required for exploration.	2	D	L5	<ul style="list-style-type: none"> Landownership database as detailed in Appendix B of CCS Where required Land Access Agreements in place prior to physical exploration being undertaken. Please note that activities are limited to desktop studies at this stage of the works program Register of Land Access Agreements to be created 	1	E	L1	<ul style="list-style-type: none"> Landownership Database (Appendix B of CCS) Land Access Agreements kept on file 	Senior Land and Property Officer or delegate
Community	Inadequate response to community enquiries, concerns or complaints.	<ul style="list-style-type: none"> Stakeholder contact information not current or up to date. Lack of awareness/ notification may cause concern with the local community. Stakeholders are unsure of how to contact NHG to address concerns 	2	D	L5	<ul style="list-style-type: none"> Community Consultation Strategy (CCS) & Landowner Liason Program Complaints Procedure NHG contact details to be provided in notification to residents Interactions from the community kept on record for inclusion in the Annual Activity Reporting and Annual Consultation Reports Annual Activity Reporting and Annual Community Consultation Reports Monitoring and Review of the Community Consultation Strategy as per Section 6 of CCS 	2	E	L3	<ul style="list-style-type: none"> Complaints Register Annual Activity Report and Annual Community Consultation Report 	Senior Land and Property Officer or delegate

LIST OF ATTENDEES

Date Attended	Attendees	Position Description
9/05/2024		Senior Environmental Scientist JBA
		Senior Environmental Scientist JBA
		Senior Land and Property Officer NHG
		Principal Land & Environment Advisor
		Bengalla Agricultural Company

Assessment Lease (AL) 19 EXPLORATION RISK ASSESSMENT PUBLIC VERSION



Risk Category	Risk (Description/Scenario)	Cause	Preliminary Risk			Current Controls or Mitigation Strategy	Residual Risk			Tracked via which form / database	Responsible Person
			C	L	R		C	L	R		
		NHG									
<p><i>Note: This strategy and risk assessment does not consider relevant Work Health and Safety Act.</i></p>											

APPENDIX B
LANDOWNERSHIP REGISTER

LAYER	PARCEL_ID	EDH_BLOCK	FIRST_NAME	LAND_OWNER	AL19	RESIDENCE	EASTING	NORTHING	LOT ADDRESS	PREFERRED CONTACT
Crown	1//DP101490	128			Y	N				
Crown	1//DP33125	129			Y	N				
Crown	3//DP114101	420			Y	N				
Crown	1//DP1173069	C12			Y	N				
Crown	1//DP1173069	C12			Y	N				
Crown	1//DP1173069	C12			Y	N				
Crown	7302//DP1145974	C17			Y	N				
Crown	162//DP750951	C21			Y	N				
Crown	1//DP504641	C22			Y	N				
Crown	205//DP722407	C23			Y	N				
Crown	206//DP725082	C24			Y	N				
Mangoola Coal	3//DP556410	195			Y	Y	286572.172	6428570.846		
Mount Pleasant Project	203//DP750926				Y	N				
Mount Pleasant Project	207//DP750926				Y	N				
Mount Pleasant Project	166//DP750926	MtP118			Y	N				
Mount Pleasant Project	1//DP998239	MtP16			Y	Y	291563.181	6430725.767		
Mount Pleasant Project	3//DP998239	MtP24			Y	N				
Mount Pleasant Project	45//DP750919	MtP48			Y	N				
New Hope West Muswellbrook	4//DP556410	194			Y	Y	286867.368	6428576.069		
New Hope West Muswellbrook	212//DP634465	198			Y	Y	286578.307	6429561.674		
New Hope West Muswellbrook	42//DP867036	215			Y	N				
New Hope West Muswellbrook	5//DP836268	216			Y	N				
New Hope West Muswellbrook	41//DP867036	218			Y	Y	287943.844	6432764.773		
New Hope West Muswellbrook	3//DP836268	219			Y	Y	288253.958	6433350.696		
New Hope West Muswellbrook	32//DP748710	221			Y	Y	288160.919	6434616.392		
New Hope West Muswellbrook	1//DP836268	222			Y	Y	289191.89	6433779.216		
New Hope West Muswellbrook	1//DP836268	222			Y	Y	289363.75	6434576.211		
New Hope West Muswellbrook	312//DP543672	223			Y	N				
New Hope West Muswellbrook	2//DP807495	287			Y	Y	288800.628	6435161.12		
New Hope West Muswellbrook	101//DP750951	356			Y	N				
New Hope West Muswellbrook	1//DP1089306	MC1			Y	N				
New Hope West Muswellbrook	23//DP825944	MC10			Y	N				
New Hope West Muswellbrook	1014//DP806290	MC11			Y	Y	289297.168	6434608.1		
New Hope West Muswellbrook	1//DP715310	MC12			Y	Y	287602.497	6434884.944		
New Hope West Muswellbrook	11//DP830934	MC13			Y	Y	287813.844	6435336.071		
New Hope West Muswellbrook	13//DP830934	MC14			Y	N				
New Hope West Muswellbrook	140//DP750915	MC15			Y	N				
New Hope West Muswellbrook	17//DP830934	MC16			Y	Y	288464.218 289568.924	6437097.902 6436698.067		
New Hope West Muswellbrook	2//DP1089306	MC2			Y	Y	288591.677	6426064.648		
New Hope West Muswellbrook	3//DP1089306	MC3			Y	N				
New Hope West Muswellbrook	1//DP185117	MC4			Y	N				
New Hope West Muswellbrook	36//DP1054568	MC5			Y	N				
New Hope West Muswellbrook	1//DP163463	MC6			Y	Y	287942.894	6427955.416		
New Hope West Muswellbrook	A//DP163190	MC7			Y	Y	287638.435	6421811.075		
New Hope West Muswellbrook	3//DP584230	MC8			Y	N				
New Hope West Muswellbrook	4//DP584230	MC9			Y	N				
Private Freehold	1//DP742324	171			Y	Y	291267.329	6429626.87		
Private Freehold	1//DP501808	172			Y	N				

Private Freehold	11//DP732120	173			Y	N			
Private Freehold	4//DP1183514	346			Y	N			
Private Freehold	1//DP732125	410			Y	Y	290203.7	6438462.028	
Private Freehold	1211//DP771406	145			Y	Y	289167.693	6423424.881	
Private Freehold	1210//DP771406	146			Y	Y	289339.764	6423365.101	
Private Freehold	22//DP750931	411			Y	N			
Private Freehold	15//DP750931	412			Y	N			
Private Freehold	178//DP750951	374			Y	Y	294634.216 294942.092	6439777.745 6439938.96	
Private Freehold	12//DP830934	441			Y	Y	288297.56 288088.887	6435599.645 6435332.378	
Private Freehold	40//DP827901	440			Y	N			
Private Freehold	1//DP821142	442			Y	N			
Private Freehold	181//DP750951	376			Y	Y	294094.2	6439217.849	
Private Freehold	101//DP1157712	422			Y	Y	292053.506	6440187.638	
Private Freehold	102//DP1157712	423			Y	Y	292462.46	6439848.49	
Private Freehold	171//DP750926	424			Y	N			
Private Freehold	2//DP585144	425			Y	N			
Private Freehold	2//DP838220	426			Y	N			
Private Freehold	233//DP750926	427			Y	N			
Private Freehold	3//DP585144	428			Y	N			
Private Freehold	59//DP750926	429			Y	N			
Private Freehold	9//DP112742	430			Y	N			
Private Freehold	1//DP170981	400			Y	N			
Private Freehold	151//DP750915	401			Y	N			
Private Freehold	20//DP1090871	402			Y	Y	290089.351	6437922.332	
Private Freehold	245//DP777225	403			Y	Y	289662.174	6437850.807	
Private Freehold	250//DP750926	404			Y	N			
Private Freehold	1//DP838220	405			Y	Y	290592.456	6437644.898	
Private Freehold	1//DP416437	413			Y	Y	292848.647	6442030.105	
Private Freehold	33//DP748710	438			Y	Y	288346.115	6434695.394	
Private Freehold	14//DP830934	443			Y	Y	288448.648	6436267.651	
Private Freehold	1//DP75029	141			Y	N			
Private Freehold	1//DP414239	142			Y	N			
Private Freehold	A//DP107412	189			Y	Y	288372.671	6427935.035	
Private Freehold	1//DP519055	193			Y	N			
Private Freehold	1770//DP1175346	435			Y	N			
Private Freehold	1771//DP1175346	436			Y	Y	295466.148	6440392.104	
Private Freehold	1772//DP1175346	437			Y	Y	295466.148	6440392.104	
Private Freehold	324//DP829973	203			Y	N			
Private Freehold	1//DP432670	204			Y	N			
Private Freehold	56//DP750915	205			Y	N			
Private Freehold	57//DP750915	206			Y	N			
Private Freehold	51//DP750915	207			Y	N			
Private Freehold	5//DP1000366	208			Y	Y	286501.392	6430792.292	
Private Freehold	2//DP625029	399			Y	Y	291397.406	6439009.379	

Private Freehold	16//DP731123	199			Y	Y	286648.846	6429791.084	
Private Freehold	15//DP731123	202			Y	Y	286659.272	6429920.149	
Private Freehold	2//DP1183514	373			Y	N			
Private Freehold	121//DP853057	304			Y	N			
Private Freehold	21//DP1293763	309			Y	Y	286568.33	6433587.207	
Private Freehold	13//DP1089695	131			Y	N			
Private Freehold	3//DP113738	132			Y	N			
Private Freehold	2//DP75029	133			Y	Y	288746.311 288663.177 288411.918	6422671.271 6422490.485 6422519.416	
Private Freehold	2//DP113738	135			Y	Y	289094.029	6422378.086	
Private Freehold	1//DP113738	136			Y	N			
Private Freehold	1012//DP1122973	137			Y	N			
Private Freehold	16//DP8090	138			Y	N			
Private Freehold	3//DP821113	139			Y	N			
Private Freehold	2//DP821113	140			Y	N			
Private Freehold	14//DP1089695	143			Y	N			
Private Freehold	15//DP8090	144			Y	N			
Private Freehold	4//DP113744	354			Y	N			
Private Freehold	47//DP750919	185			Y	N			
Private Freehold	21//DP870608	305			Y	N			
Private Freehold	101//DP1124883	431			Y	Y	291737.687	6437535.946	
Private Freehold	2//DP584230	351			Y	N			
Private Freehold	32//DP750919	176			Y	N			
Private Freehold	63//DP750919	177			Y	N			
Private Freehold	64//DP750919	178			Y	N			
Private Freehold	37//DP750919	179			Y	N			
Private Freehold	22//DP750919	180			Y	N			
Private Freehold	31//DP750919	181			Y	Y	289456.404	6428819.074	
Private Freehold	48//DP750919	182			Y	N			
Private Freehold	15//DP830934	432			Y	Y	288471.094 288560.36	6437103.693 6436963.305	
Private Freehold	22//DP825944	288			Y	Y	289004.415	6434414.098	
Private Freehold	4//DP215827	102			Y	Y	289419.151	6420975.682	
Private Freehold	122//DP620455	126			Y	Y	289391.413 289360.085 289157.931	6423192.161 6423046.656 6422756.76	
Private Freehold	2//DP836268	220			Y	N			
Private Freehold	31//DP748710	308			Y	Y	287919.727	6434472.736	
Private Freehold	2//DP519055	192			Y	Y	289103.307	6426844.344	
Private Freehold	1//DP655204	149			Y	Y	289456.44	6424901.712	
Private Freehold	2//DP201081	150			Y	N			
Private Freehold	1//DP33126	130			Y	N			
Private Freehold	1//DP738597	169			Y	Y	291384.47	6428702.591	
Private Freehold	5//DP21335	170			Y	N			
Private Freehold	100//DP774932	174			Y	N			
Private Freehold	2//DP21335	175			Y	N			
Private Freehold	3//DP1183514	347			Y	N			
Private Freehold	13//DP750919	186			Y	Y	289028.402	6427913.52	
Private Freehold	2//DP543712	187			Y	N			

Private Freehold	15//DP750919	190			Y	N				
Private Freehold	58//DP750919	191			Y	N				
Private Freehold	110//DP750931	357			Y	N				
Private Freehold	134//DP750951	358			Y	N				
Private Freehold	135//DP750951	359			Y	N				
Private Freehold	150//DP750951	360			Y	N				
Private Freehold	151//DP750951	361			Y	N				
Private Freehold	152//DP750951	362			Y	N				
Private Freehold	153//DP750951	363			Y	N				
Private Freehold	159//DP750951	364			Y	N				
Private Freehold	160//DP750951	365			Y	N				
Private Freehold	161//DP750951	366			Y	N				
Private Freehold	1//DP1113991	367			Y	N				
Private Freehold	2//DP1113991	368			Y	N				
Private Freehold	3//DP1113991	369			Y	N				
Private Freehold	4//DP1113991	370			Y	N				
Private Freehold	5//DP1113991	371			Y	N				
Private Freehold	6//DP1113991	372			Y	N				
Private Freehold	1//DP625029	444			Y	Y	291178.629	6437475.879		
Private Freehold	37//DP750915	294			Y	Y	286313.819	6433066.106		
Private Freehold	39//DP750915	295			Y	N				
Private Freehold	40//DP750915	296			Y	N				
Private Freehold	41//DP750915	297			Y	N				
Private Freehold	42//DP750915	298			Y	N				
Private Freehold	91//DP750915	299			Y	N				
Private Freehold	93//DP750915	300			Y	N				
Private Freehold	115//DP750915	301			Y	N				
Private Freehold	123//DP750915	302			Y	N				
Private Freehold	142//DP750915	303			Y	N				
Private Freehold	1//DP807495	286			Y	Y	289233.443	6435186.034		
Private Freehold	3//DP807495	439			Y	N				
Private Freehold	1//DP114101	414			Y	N				
Private Freehold	1//DP900094	415			Y	N				
Private Freehold	10//DP861114	416			Y	N				
Private Freehold	133//DP750931	417			Y	N				
Private Freehold	2//DP114101	418			Y	N				
Private Freehold	2//DP33881	419			Y	N				
Private Freehold	4//DP114101	421			Y	N				
Private Freehold	100//DP1179604	408			Y	N				
Private Freehold	101//DP1179604	409			Y	N				
Private Freehold	1//DP34473	406			Y	N				
Private Freehold	22//DP576069	407			Y	Y	291677.841	6441996.913		
Private Freehold	1//DP1085900	183			Y	Y	289098.489	6428233.16		
Private Freehold	1//DP543712	188			Y	N				
Private Freehold	1//DP1102585	225			Y	N				
Private Freehold	2//DP1102585	226			Y	N				
Private Freehold	61//DP750926	227			Y	N				
Private Freehold	62//DP750926	228			Y	N				
Private Freehold	63//DP750926	229			Y	N				
Private Freehold	4//DP21335	230			Y	Y	290601.045	6433698.698		

Private Freehold	5//DP750926	231			Y	N			
Private Freehold	1//DP136249	232			Y	N			
Private Freehold	2//DP136249	233			Y	N			
Private Freehold	110//DP873834	434			Y	Y	297628.909	6436842.263	
Private Freehold	6//DP114090	378			Y	N			
Private Freehold	3//DP114090	380			Y	N			
Private Freehold	4//DP114090	382			Y	N			
Private Freehold	5//DP114090	383			Y	N			
Private Freehold	1//DP135041	384			Y	N			
Private Freehold	1//DP183505	385			Y	N			
Private Freehold	1//DP552475	386			Y	N			
Private Freehold	21//DP576069	387			Y	Y	290058.837	6443248.08	
Private Freehold	132//DP750931	388			Y	N			
Private Freehold	136//DP750931	389			Y	N			
Private Freehold	144//DP750931	390			Y	N			
Private Freehold	16//DP750931	392			Y	N			
Private Freehold	28//DP750931	393			Y	N			
Private Freehold	48//DP750931	394			Y	N			
Private Freehold	49//DP750931	395			Y	N			
Private Freehold	69//DP750931	396			Y	N			
Private Freehold	72//DP750931	397			Y	N			
Private Freehold	7001//DP1124389	398			Y	N			
Private Freehold	16//DP830934	433			Y	Y	288702.975	6436632.449	
Private Freehold	1//DP584230	224			Y	N			