

# BENGALLA MINE Community Consultative Committee Update

## The Bengalla CCC Newsletter...

The material in this issue of the Bengalla Mine Community Consultative Committee (Committee) newsletter has been selected by the CCC representatives.

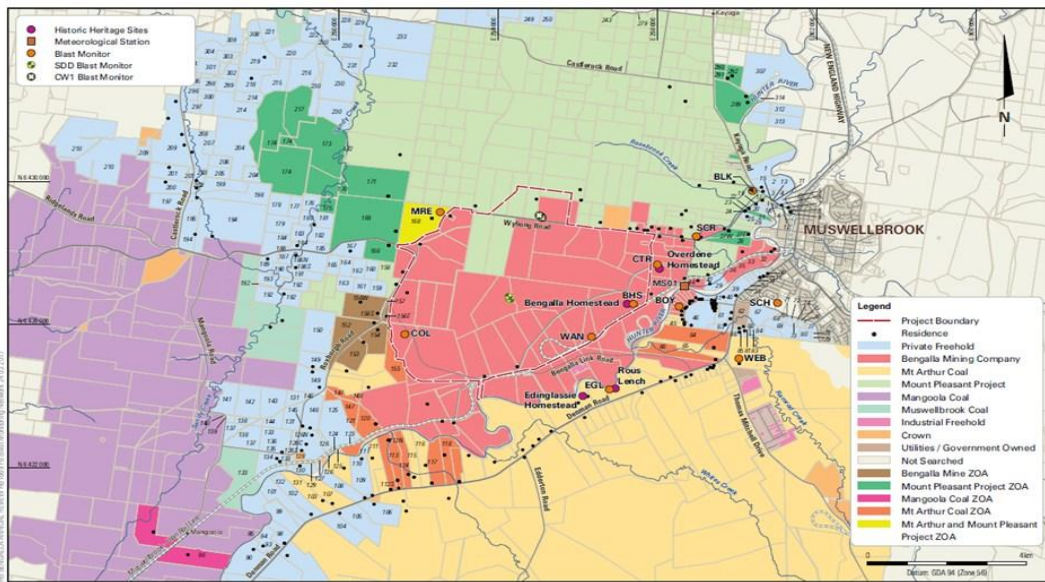
The Committee is comprised of community representatives and representatives from Bengalla Mine including the General Manager. This newsletter aims to inform interested community members on matters discussed during CCC meetings.

## Bengalla Mine– Environment Management

Bengalla Mining Company operates Bengalla Mine for and on behalf of the Bengalla Joint Venture according to various authorities, one authority being development consent State Significant Development 5170. SSD 5170 requires various management plans, two are the Blast Management Plan and the Water Management Plan.

### Blast Management Plan

BMC is required to undertake a blast monitoring program to evaluate the performance of Bengalla blasting operations against relevant blast criteria. Blast monitoring is undertaken at 11 real time blast monitors as shown on Figure 3.



**FIGURE 3**

BMC is required to conduct blasts according to certain blast criteria in table 4

### Blasting Criteria

Location	Airblast overpressure (dB(Lin Peak))	Ground vibration (mm/s)	Allowable exceedance
Residence on privately owned land <sup>a</sup>	115	5	5% of the total number of blasts over a period of 12 months*
	120	10	0%

During 2023 BMC conducted 164 blasts in accordance with the blasting criteria

# Bengalla Mine Community Consultative Committee Update

## Water Management Plan

Water at Bengalla is characterised to Water Type Definitions.

Water Type	Meaning
Clean Water	Water pumped from the Hunter River into the Hunter River Raw Water Dam or run-off from a catchment that is undisturbed by mining and associated activities. Runoff from fully rehabilitated mined out areas where the rehabilitation area has been relinquished.
Mine Water	Water that accumulates within, or drains from, active mining and infrastructure areas and any other areas where run-off may have <u>come into contact with coal or carbonaceous material</u> (synonymous with 'dirty water').
Sediment Water	Runoff from areas disturbed by mining and associated activities that has not <u>come into contact with coal or carbonaceous material</u> . Includes water from non-relinquished rehabilitation areas.
Contaminated Water	Associated with water used by the vehicle wash bay and bathhouse that is captured and processed to enable its transfer and reuse in the mine water system.

Water management at Bengalla is based on the following key principles:

- Minimise use of clean water from external sources;
- Where possible, divert clean water away from areas disturbed by mining and associated activities;
- Collect sediment water in catch drains and direct to sediment traps and settling dams, and where required reuse in the Bengalla water management system;
- Collect runoff from industrial areas (mine water) in catch drains and transfer to storage dams for reuse, where required, in the Bengalla water management system;
- Transfer of open cut pit water (mine water) to storage dams and where required re-use in the Bengalla water management system; and
- Minimal off-site discharge of surplus mine water.



*The minutes and presentations from CCC meetings are available for public viewing at the Muswellbrook and Denman Libraries. If you have an interest in any of the topics discussed at the CCC and would like further information on this topic or in future*

If you wish to attend a Bengalla CCC meeting, or would like an issue raised by one of the Committee members, please contact any of the members listed below:

Mr. Malcolm Ogg (Chairperson)	Ph: 6543 4583	Mr. Glenn Meyn (Bengalla)	Ph: 6542 9500
Mrs. Llewellyn Bates	Ph: 6547 9170	Mr. Craig White (Bengalla)	Ph: 6542 9500
Mr. Cam Halfpenny (Bengalla GM)	Ph: 6542 9500	Mr Jonathon Moore	Ph: 6547 9164
Mrs. Fiona Hartin (Bengalla)	Ph: 6542 9500	Mrs Jennifer Lecky	
Ms Theresa Folpp (Muswellbrook Council)	Ph: 6549 3700		

Bengalla Environmental Complaints Hotline number: 1800 178 984

[www.bengalla.com.au](http://www.bengalla.com.au)