



Bengalla Mining Company Pty Limited

Bengalla Road (Locked Mailbag 5)
Muswellbrook NSW 2333 Australia

ABN 32 053 909 470

T: +61 2 6542 9500

F: +61 2 6542 9599

bengalla.com.au

Bengalla Mine

Environment Protection Licence 6538 Monthly Monitoring Data Summary

October 2020



Bengalla Mining Company Pty Limited

Bengalla Road (Locked Mailbag 5)
Muswellbrook NSW 2333 Australia

ABN 32 053 909 470

T: +61 2 6542 9500
F: +61 2 6542 9599

bengalla.com.au

Contents

1. INTRODUCTION	3
2. AIR QUALITY	4
3. SURFACE WATER	5
4. NOISE	8
5. BLASTING.....	10

Tables

Table 1. PM10 Monitoring Summary.....	5
Table 2. Noise – Bengalla Only LAeq (15 minute) Monitoring Summary.....	9
Table 3. Blast Overpressure Monitoring Summary.....	11
Table 4. Blast Vibration Monitoring Summary.....	11



Bengalla Mining Company Pty Limited

Bengalla Road (Locked Mailbag 5)
Muswellbrook NSW 2333 Australia

ABN 32 053 909 470

T: +61 2 6542 9500

F: +61 2 6542 9599

bengalla.com.au

1. INTRODUCTION

Environmental Protection Licence (EPL) holders are required under the *Protection of the Environment Operations Act 1997* to make publicly available their monitoring results for those parameters specified in the EPL. This document has been prepared to satisfy this requirement.

Bengalla Mining Company Pty Limited's (BMC) operations are conducted in accordance with EPL 6538. The licence details are as follows:

License Holder:	Bengalla Mining Company Pty Limited
Licence Number:	6538
Premises:	Bengalla Mine Bengalla Road via Muswellbrook NSW 2333
Access to Licence:	http://www.epa.nsw.gov.au/prpoeoapp/Detail.aspx?instid=6538&id=6538&option=licence&searchrange=licence&range=POEOlicence&prp=no&status=Issued
Monitoring Locations:	See main text and Appendix A

This document provides a summary of environmental monitoring data sampled as prescribed by EPL 6538 for October 2020 (Reporting Period). Monitoring data provided is as follows:

- Air quality, particulate matter less than 10 microns (PM₁₀);
- Surface water, including discharge mine water and effluent water;
- Noise; and
- Blast vibration and overpressure.



Bengalla Mining Company Pty Limited

Bengalla Road (Locked Mailbag 5)
Muswellbrook NSW 2333 Australia

ABN 32 053 909 470

T: +61 2 6542 9500

F: +61 2 6542 9599

bengalla.com.au

2. AIR QUALITY

Under EPL 6538 BMC is required to continuously record the average PM₁₀ concentration at EPA Monitoring Points 22, 23 and 24 at intervals of 10 minutes. As per Condition E1.1, BMC commenced monitoring at these EPA Monitoring Points on 31 August 2017.

PM₁₀ data for the Reporting Period is provided in **Table 1**.

2.1 Particulate Matter less than 10 Microns

Pollutant:	PM ₁₀
Unit of measure:	Micrograms per cubic metre (µg/m ³)
Monitoring location:	See Table 1 and Appendix A .
Monitoring frequency required by licence:	10-minute intervals
Sampled:	01/10/2020 – 31/10/2020

Table 1. PM10 Monitoring Summary

Sampling point		No. of samples required by licence	No. of samples collected and analysed	Minimum sample value	Maximum sample value	Monthly mean of sample
EPA22	Lumeah Dairy, Bengalla Road, Muswellbrook	4464	4461	0	87.9	10.9
EPA23	Wybong Road (East), Muswellbrook	4464	4117 ⁽¹⁾	0	148.5	26.3
EPA24	Wybong Road (West), Muswellbrook	4464	4455	0	102.3	10.9

(Table 1 represents total impact (ie incremental increase in concentration due to the development plus background concentrations due to other sources))

1. Due to equipment failure (low voltage alerts) the number of samples recorded at EPA23 was reduced.

3. SURFACE WATER

3.1 Discharge Monitoring

BMC participates in the Hunter River Salinity Trading Scheme (**HRSTS**). In accordance with EPL 6538, BMC maintains two monitoring locations to measure concentration, volume and mass of mine water discharges (see **Appendix B**).

3.1.1 Volume

Pollutant:	Mine water
Unit of measure:	Mega litres per day (ML/day)
Monitoring location:	EPA26 – Outlet pipe from 700 ML HRSTS storage dam.
Monitoring frequency required by licence:	Continuous during all discharge events.
Volume/mass limit:	200 ML/day



**NEW HOPE
GROUP**

Bengalla Mining Company Pty Limited

Bengalla Road (Locked Mailbag 5)
Muswellbrook NSW 2333 Australia

ABN 32 053 909 470

T: +61 2 6542 9500

F: +61 2 6542 9599

bengalla.com.au

Sampled: Not applicable. During the Reporting Period, Bengalla did not discharge any mine water under the HRSTS.

3.1.2 Conductivity

Pollutant: Conductivity

Unit of measure: Microsiemens per centimetre (**µS/cm**)

Monitoring location: EPA26 – Outlet pipe from 700 ML HRSTS storage dam.
EPA2 – Tributary monitoring point in Dry Creek downstream of EPA26.

Monitoring frequency required by licence: Continuous during all discharge events (EPA26); Two times daily during discharge (EPA02).

Sampled: Not applicable. During the Reporting Period, Bengalla did not discharge any mine water under the HRSTS.

3.1.3 Total suspended solids and pH

Pollutants: pH and Total Suspended Solids (**TSS**)

Unit of measure: pH and Milligrams per litre (**mg/L**)

Monitoring location: EPA26 – Outlet pipe from 700 ML HRSTS storage dam.

Monitoring frequency required by licence: Daily during all discharge events

pH limit: 6.5 – 9.5 (100th percentile) (Applies to EPA26 only)

TSS limit: 120 (100th percentile) (Applies to EPA26 only)

Sampled: Not applicable. During the Reporting Period, Bengalla did not discharge any mine water under the HRSTS.



Bengalla Mining Company Pty Limited

Bengalla Road (Locked Mailbag 5)
Muswellbrook NSW 2333 Australia

ABN 32 053 909 470

T: +61 2 6542 9500

F: +61 2 6542 9599

bengalla.com.au

3.2 Effluent Quality Monitoring

Under EPL 6538 BMC is required to take quarterly grab samples from effluent quality monitoring point EPA25.

Pollutants:	Faecal Coliforms and pH
Unit of measure:	Colony Forming Units (CFU) per 100 millilitres (CFU/100mL) and pH
Monitoring location:	EPA25 – See Appendix B .
Monitoring frequency required by licence:	Quarterly
Sampled:	Not applicable. BMC was not required to undertake effluent quality monitoring during the Reporting Period.



Bengalla Mining Company Pty Limited

Bengalla Road (Locked Mailbag 5)
Muswellbrook NSW 2333 Australia

ABN 32 053 909 470

T: +61 2 6542 9500

F: +61 2 6542 9599

bengalla.com.au

4. NOISE

In accordance with EPL 6538, BMC undertakes compliance attended noise monitoring for 15 minutes once per calendar month during the night period (10 pm to 7 am) at three locations representative of the nearest private receivers.

Noise monitoring data for the Reporting Period is provided in **Table 5**.

Pollutant:	Noise – Bengalla Only
Unit of measure:	LAeq (15 minute)
Monitoring locations:	See Table 2 and Appendix C .
Monitoring frequency required by licence:	Monthly
EPA7/AN01 limit:	35 dB(A)
EPA9/AN04 limit:	35 dB(A)
EPA8/AN03 limit:	40 dB(A)
Sampled:	21 October 2020



Bengalla Mining Company Pty Limited

Bengalla Road (Locked Mailbag 5)
Muswellbrook NSW 2333 Australia

ABN 32 053 909 470

T: +61 2 6542 9500
F: +61 2 6542 9599

bengalla.com.au

Table 2. Noise – Bengalla Only¹ LAeq (15 minute) Monitoring Summary

Sampling point	No. of samples required by licence	No. of samples taken and analysed	Sample Date	Sample Time	Measured value
EPA07/AN01	1	1	21/10/2020	00:23 – 00:38	31
EPA08/AN03	1	1	21/10/2020	01:13 – 01:28	Est 30 ⁽²⁾
EPA09/AN04	1	1	21/10/2020	01:55 – 02:10	IA

Note:

1. LAeq,15minute operational noise levels for Bengalla in the absence of all other noise sources.

IA - Inaudible. When there was no noise from the source of interest (Bengalla Mine) audible at the monitoring location.

2. Measured total noise levels included birds, cattle, a dog and trucks. Noise from Bengalla could not be measured separately therefore a conservative estimate of 30 LAeq was reported.



Bengalla Mining Company Pty Limited

Bengalla Road (Locked Mailbag 5)
Muswellbrook NSW 2333 Australia

ABN 32 053 909 470

T: +61 2 6542 9500

F: +61 2 6542 9599

bengalla.com.au

5. BLASTING

In accordance with EPL 6538, BMC maintains three blast monitors on private (non-mine owned) land to measure air-blast overpressure and ground vibration for all blast events undertaken at Bengalla.

Overpressure and ground vibration data for the Reporting Period is provided in **Tables 3 and 4**.

Pollutant:	Air blast overpressure & ground vibration peak particle velocity
Unit of measure:	dB (Lin Peak) and millimetres per second (mm/s)
Monitoring locations:	See Table 3 , Table 4 and Appendix C .
Monitoring frequency required by licence:	All blasts
Overpressure limits:	a) 115 linear decibels (dB(L)) for more than 5% of the total number of blasts carried out on the premises within the 12 months annual reporting period; and b) 120 dB(L) at any time
Ground vibration limits:	a) exceed 5 millimetres/second (mm/s) for more than 5% of the total number of blasts carried out on the premises within the 12 months annual reporting period; and b) 10mm/s at any time
Sampled:	01/10/2020 – 31/10/2020



Bengalla Mining Company Pty Limited

Bengalla Road (Locked Mailbag 5)
Muswellbrook NSW 2333 Australia

ABN 32 053 909 470

T: +61 2 6542 9500
F: +61 2 6542 9599

bengalla.com.au

Table 3. Blast Overpressure Monitoring Summary

Sampling point	Pollutant	Unit of measure	No. of samples required by licence	No. of samples collected and analysed	Minimum value	Maximum value	Mean of samples
BLK (EPA20)	Overpressure	dB(L)	All blast events	15	72.6	114.3	94.6
SCH (EPA19)	Overpressure	dB(L)	All blast events	15	81.4	108.5	91.9
MRE (EPA12)	Overpressure	dB(L)	All blast events	15	73.8	110.9	99.9

Table 4. Blast Vibration Monitoring Summary

Sampling point	Pollutant	Unit of measure	No. of samples required by licence	No. of samples collected and analysed	Minimum value	Maximum value	Mean of samples
BLK (EPA20)	Ground vibration	mm/s	All blast events	15	0.01	0.39	0.16
SCH (EPA19)	Ground vibration	mm/s	All blast events	15	0.00	0.18	0.08
MRE (EPA12)	Ground vibration	mm/s	All blast events	15	0.01	2.40	1.15

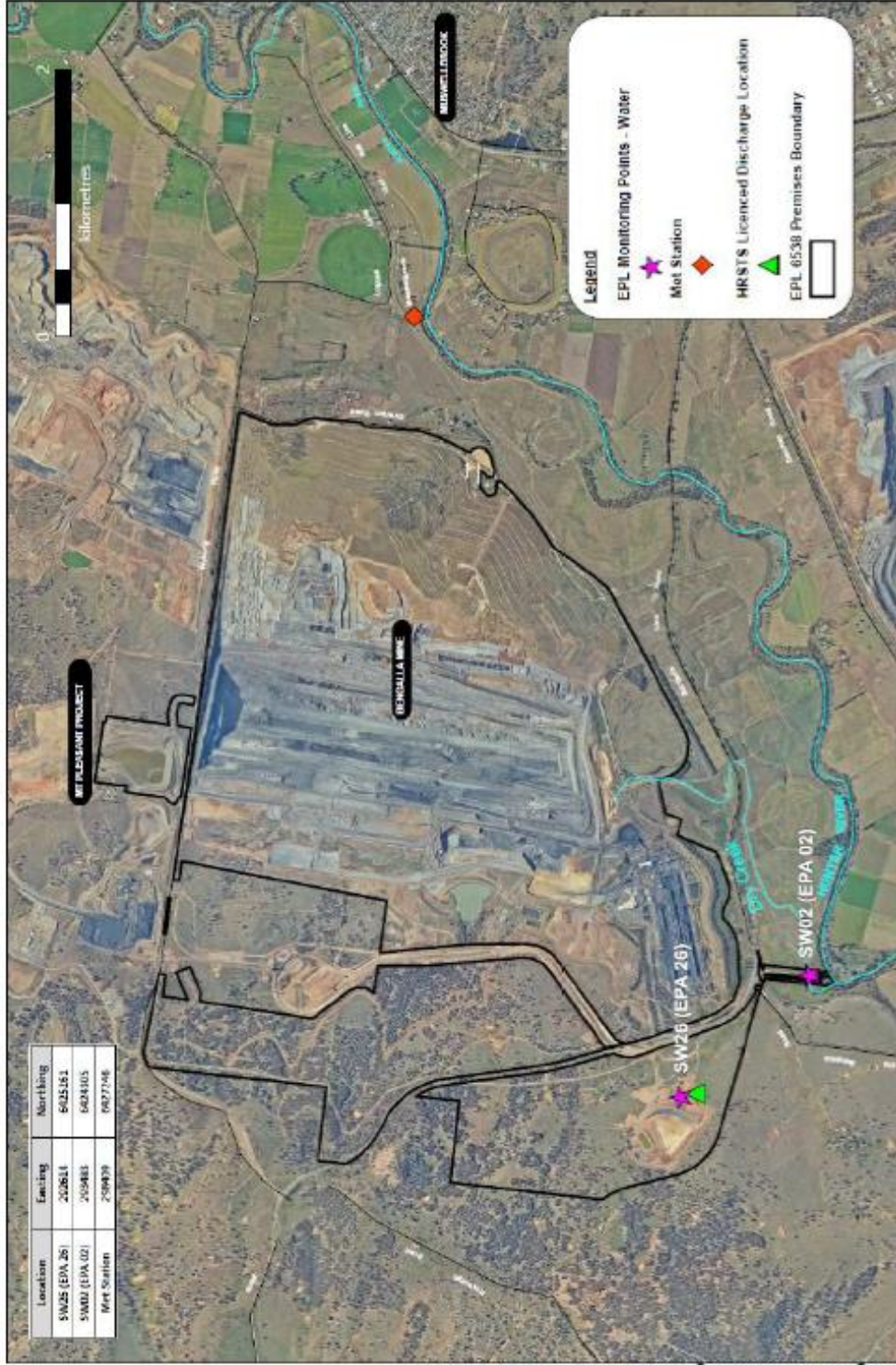
Operator, for and on behalf of Bengalla Joint Venture, an unincorporated joint venture between:
New Hope Bengalla Pty Ltd, Taipower Bengalla Pty Limited.

Appendix A

EPL 6538 Particulate Matter Monitoring Locations

Appendix B

EPL 6538 Surface Water Monitoring Locations



Location	Easting	Northing
SW26 (EPA 26)	202611	6025151
SW00 (EPA 02)	205483	6024105
Met Station	206439	6027146

Note: Coordinates are approximate only
Coordinate system: GDA94 (zone 56)

BENGALLA MINE

EPL Monitoring Points - Water





Location	Easting	Northing
EPA25	294,016	6,425,174

Legend

- Project Boundary
- Disturbance Boundary
- Effluent quality monitoring point



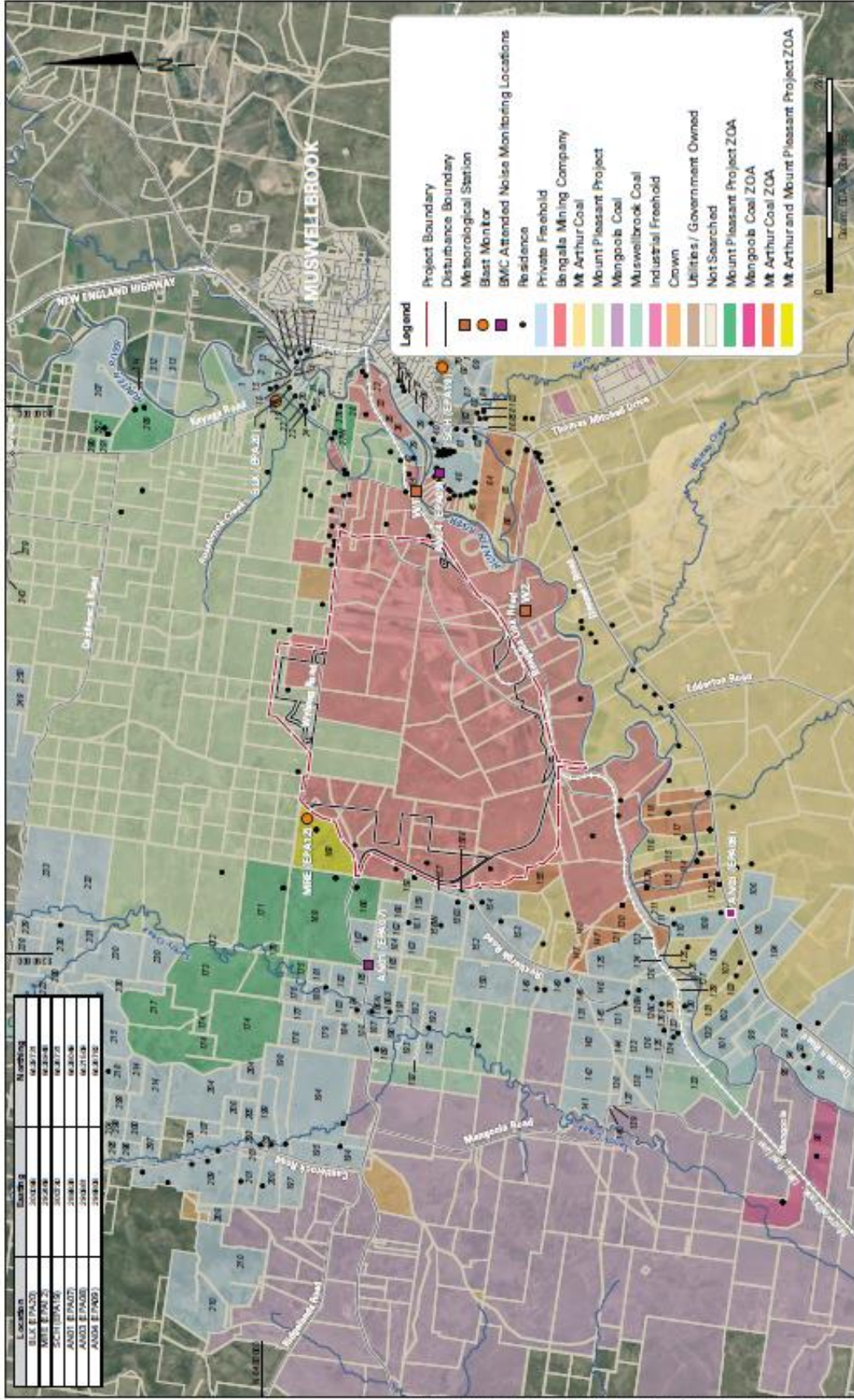
BENGALLA MINE

EPL 6538 Effluent Quality Monitoring Location

PRJ3286 BengallaMineNSW 50cm 25072018 gda94mga56 ortho full-area

Appendix C

EPL 6538 Noise and Blast Monitoring Locations



BENGALLA MINE

EPL 6538 Noise & Blast Monitoring Locations