



**Bengalla Mining Company Pty. Limited**

Bengalla Road, (Locked Mailbag 5)

Muswellbrook NSW 2333 Australia

A.B.N. 32 053 909 470

## **Bengalla Mine**

# **Environment Protection Licence 6538 Monthly Monitoring Data Summary**

**June 2019**

Operator, for and on behalf of Bengalla Joint Venture, an unincorporated joint venture between:  
Harcove Pty Ltd, Wesfarmers Bengalla Limited, Taipower Bengalla Pty Limited & Mitsui Bengalla Investment Pty Limited.

[www.bengalla.com.au](http://www.bengalla.com.au)



**Bengalla Mining Company Pty. Limited**

Bengalla Road, (Locked Mailbag 5)

Muswellbrook NSW 2333 Australia

A.B.N. 32 053 909 470

## Contents

1. INTRODUCTION .....	3
2. AIR QUALITY .....	4
3. SURFACE WATER .....	6
4. NOISE .....	8
5. BLASTING .....	10

## Tables

Table 1. PM10 Monitoring Summary .....	5
Table 2. Noise – Bengalla Only <sup>1</sup> LAeq (15 minute) Monitoring Summary .....	9
Table 3. Blast Overpressure Monitoring Summary .....	11
Table 4. Blast Vibration Monitoring Summary .....	11



## 1. INTRODUCTION

Environmental Protection Licence (EPL) holders are required under the *Protection of the Environment Operations Act 1997* to make publicly available their monitoring results for those parameters specified in the EPL. This document has been prepared to satisfy this requirement.

Bengalla Mining Company Pty Limited's (BMC) operations are conducted in accordance with EPL 6538. The licence details are as follows:

License Holder:	Bengalla Mining Company Pty Limited
Licence Number:	6538
Premises:	Bengalla Mine Bengalla Road via Muswellbrook NSW 2333
Access to Licence:	<a href="http://www.epa.nsw.gov.au/prpoeoapp/Detail.aspx?instid=6538&amp;id=6538&amp;option=licence&amp;searchrange=licence&amp;range=POEOlicence&amp;prp=no&amp;status=Issued">http://www.epa.nsw.gov.au/prpoeoapp/Detail.aspx?instid=6538&amp;id=6538&amp;option=licence&amp;searchrange=licence&amp;range=POEOlicence&amp;prp=no&amp;status=Issued</a>
Monitoring Locations:	See main text and <b>Appendix A</b>

This document provides a summary of environmental monitoring data sampled as prescribed by EPL 6538 for June 2019 (Reporting Period). Monitoring data provided is as follows:

- Air quality, particulate matter less than 10 microns (PM<sub>10</sub>);
- Surface water, including discharge mine water and effluent water;
- Noise; and
- Blast vibration and overpressure.

Monitoring Data Obtained: 11 July 2019

Monitoring Data Published: 31 July 2019



## 2. AIR QUALITY

Under EPL 6538 BMC is required to continuously record the average PM<sub>10</sub> concentration at EPA Monitoring Points 22, 23 and 24 at intervals of 10 minutes. As per Condition E1.1, BMC commenced monitoring at these EPA Monitoring Points on 31 August 2017.

PM<sub>10</sub> data for the Reporting Period is provided in **Table 1**.

### 2.1 Particulate Matter less than 10 Microns

<b>Pollutant:</b>	PM <sub>10</sub>
<b>Unit of measure:</b>	Micrograms per cubic metre (µg/m <sup>3</sup> )
<b>Monitoring location:</b>	See <b>Table 1</b> and <b>Appendix A</b> .
<b>Monitoring frequency required by licence:</b>	10-minute intervals
<b>Sampled:</b>	01/06/2019 – 31/06/2019



**Bengalla Mining Company Pty. Limited**

Bengalla Road, (Locked Mailbag 5)

Muswellbrook NSW 2333 Australia

A.B.N. 32 053 909 470

**Table 1. PM10 Monitoring Summary**

Sampling point		No. of samples required by licence	No. of samples collected and analysed	Minimum sample value	Maximum sample value	Monthly mean of sample
EPA22	Lumeah Dairy, Bengalla Road, Muswellbrook	4,320	4316	0	80.6	13.0
EPA23	Wybong Road (East), Muswellbrook	4,320	4131	0	179.9	21.5
EPA24	Wybong Road (West), Muswellbrook	4,320	4316	0	145.4	10.5

Operator, for and on behalf of Bengalla Joint Venture, an unincorporated joint venture between:  
Harpcove Pty Ltd, Wesfarmers Bengalla Limited, Taipower Bengalla Pty Limited & Mitsui Bengalla Investment Pty Limited.

[www.bengalla.com.au](http://www.bengalla.com.au)



### 3. SURFACE WATER

#### 3.1 Discharge Monitoring

BMC participates in the Hunter River Salinity Trading Scheme (**HRSTS**). In accordance with EPL 6538, BMC maintains two monitoring locations to measure concentration, volume and mass of mine water discharges (see **Appendix B**).

##### 3.1.1 Volume

<b>Pollutant:</b>	Mine water
<b>Unit of measure:</b>	Mega litres per day ( <b>ML/day</b> )
<b>Monitoring location:</b>	EPA01 – Outlet pipe from 280 ML HRSTS storage dam.
<b>Monitoring frequency required by licence:</b>	Continuous during all discharge events.
<b>Volume/mass limit:</b>	200 ML/day
<b>Sampled:</b>	Not applicable. During the Reporting Period, Bengalla did not discharge any mine water under the HRSTS.

##### 3.1.2 Conductivity

<b>Pollutant:</b>	Conductivity
<b>Unit of measure:</b>	Microsiemens per centimetre ( <b>µS/cm</b> )
<b>Monitoring location:</b>	EPA1 – Outlet pipe from 280 ML HRSTS storage dam. EPA2 – Tributary monitoring point in Dry Creek downstream of EPA1.
<b>Monitoring frequency required by licence:</b>	Continuous during all discharge events (EPA01); Two times daily during discharge (EPA02).
<b>Sampled:</b>	Not applicable. During the Reporting Period, Bengalla did not discharge any mine water under the HRSTS.



### 3.1.3 Total suspended solids and pH

<b>Pollutants:</b>	pH and Total suspended solids ( <b>TSS</b> )
<b>Unit of measure:</b>	pH and Milligrams per litre ( <b>mg/L</b> )
<b>Monitoring location:</b>	EPA01 – Outlet pipe from 280 ML HRSTS storage dam.
<b>Monitoring frequency required by licence:</b>	Daily during all discharge events
<b>pH limit:</b>	6.5 – 9.5 (100 <sup>th</sup> percentile)
<b>TSS limit:</b>	120 (100 <sup>th</sup> percentile)
<b>Sampled:</b>	Not applicable. During the Reporting Period, BMC did not discharge any mine water under the HRSTS.

### 3.2 Effluent Quality Monitoring

Under EPL 6538 BMC is required to take quarterly grab samples from effluent quality monitoring point EPA25.

<b>Pollutants:</b>	Faecal Coliforms and pH
<b>Unit of measure:</b>	Colony Forming Units (CFU) per 100 millilitres ( <b>CFU/100mL</b> ) and pH
<b>Monitoring location:</b>	EPA25 – See <b>Appendix B</b> .
<b>Monitoring frequency required by licence:</b>	Quarterly
<b>Sampled:</b>	04/06/2019

**Table 2. Effluent Quality Monitoring Summary**

<b>Pollutant</b>	<b>Unit of measure</b>	<b>No. of samples required by licence</b>	<b>No. of samples taken and analysed</b>	<b>Sample Date</b>	<b>Sample Time</b>	<b>Measured value</b>
Faecal Coliforms	CFU/100mL	1	1	04/06/2019	10:10	<1
pH	pH	1	1	04/06/2019	10:10	7.2



## 4. NOISE

In accordance with EPL 6538, BMC undertakes compliance attended noise monitoring for 15 minutes once per calendar month during the night period (10 pm to 7 am) at three locations representative of the nearest private receivers.

Noise monitoring data for the Reporting Period is provided in **Table 2**.

<b>Pollutant:</b>	Noise – Bengalla Only
<b>Unit of measure:</b>	L <sub>Aeq</sub> (15 minute)
<b>Monitoring locations:</b>	See <b>Table 2</b> and <b>Appendix C</b> .
<b>Monitoring frequency required by licence:</b>	Monthly
<b>EPA7/AN01 limit:</b>	35 dB(A)
<b>EPA9/AN04 limit:</b>	35 dB(A)
<b>EPA8/AN03 limit:</b>	40 dB(A)
<b>Sampled:</b>	5-6 June 2019





**Bengalla Mining Company Pty. Limited**

Bengalla Road, (Locked Mailbag 5)

Muswellbrook NSW 2333 Australia

A.B.N. 32 053 909 470

**Table 3. Noise – Bengalla Only<sup>1</sup> LAeq (15 minute) Monitoring Summary**

Sampling point	No. of samples required by licence	No. of samples taken and analysed	Sample Date	Sample Time	Measured value
EPA07/AN01	1	1	5/06/2019	23:22 – 23:37	26
EPA08/AN03	1	1	6/06/2019	00:00 – 00:15	28
EPA09/AN04	1	1	6/06/2019	00:44 – 00:59	30

Note:

1. LAeq,15minute operational noise levels for Bengalla in the absence of all other noise sources.

IA - Inaudible. When there was no noise from the source of interest (Bengalla Mine) audible at the monitoring location.

Operator, for and on behalf of Bengalla Joint Venture, an unincorporated joint venture between:  
Harpcove Pty Ltd, Wesfarmers Bengalla Limited, Taipower Bengalla Pty Limited & Mitsui Bengalla Investment Pty Limited.

[www.bengalla.com.au](http://www.bengalla.com.au)



## 5. BLASTING

In accordance with EPL 6538, BMC maintains three blast monitors on private (non-mine owned) land to measure air-blast overpressure and ground vibration for all blasts events undertaken at Bengalla.

Overpressure and ground vibration data for the Reporting Period is provided in **Tables 3 and 4**.

<b>Pollutant:</b>	Air blast overpressure & ground vibration peak particle velocity
<b>Unit of measure:</b>	dB (Lin Peak) and millimetres per second (mm/s)
<b>Monitoring locations:</b>	See <b>Table 3</b> , <b>Table 4</b> and <b>Appendix C</b> .
<b>Monitoring frequency required by licence:</b>	All blasts
<b>Overpressure limits:</b>	a) 115 linear decibels (dB(L)) for more than 5% of the total number of blasts carried out on the premises within the 12 months annual reporting period; and b) 120 dB(L) at any time
<b>Ground vibration limits:</b>	a) exceed 5 millimetres/second (mm/s) for more than 5% of the total number of blasts carried out on the premises within the 12 months annual reporting period; and b) 10mm/s at any time
<b>Sampled:</b>	03/06/2019 – 28/06/2019



**Bengalla Mining Company Pty. Limited**

Bengalla Road, (Locked Mailbag 5)

Muswellbrook NSW 2333 Australia

A.B.N. 32 053 909 470

**Table 4. Blast Overpressure Monitoring Summary**

Sampling point	Pollutant	Unit of measure	No. of samples required by licence	No. of samples collected and analysed	Minimum value	Maximum value	Mean of samples
BLK (EPA20)	Overpressure	dB(L)	All blast events	15	84.0	102.3	91.5
SCH (EPA19)	Overpressure	dB(L)	All blast events	15	86.4	99.6	91.6
MRE (EPA12)	Overpressure	dB(L)	All blast events	15	92.9	106.5	99.23

**Table 5. Blast Vibration Monitoring Summary**

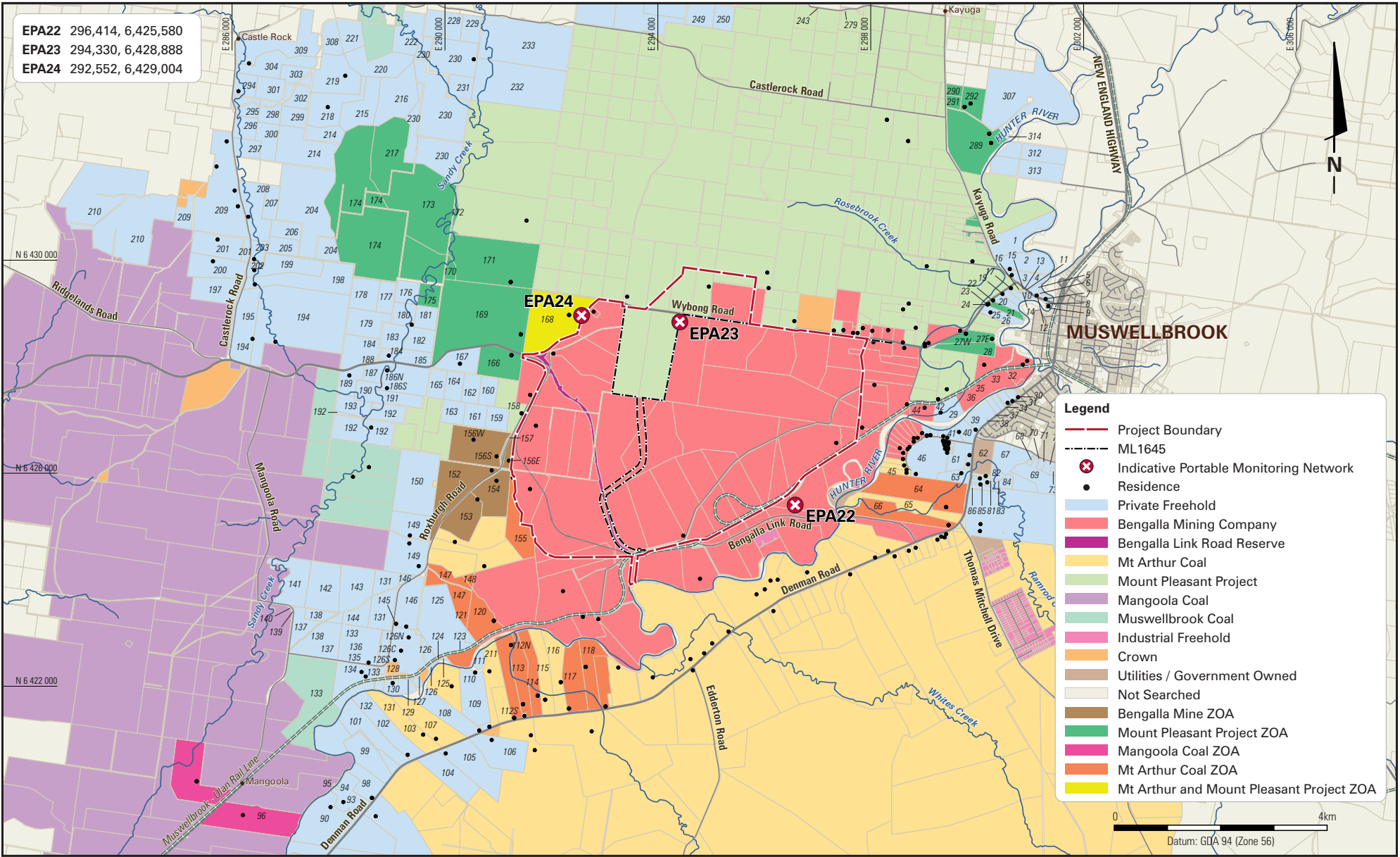
Sampling point	Pollutant	Unit of measure	No. of samples required by licence	No. of samples collected and analysed	Minimum value	Maximum value	Mean of samples
BLK (EPA20)	Ground vibration	mm/s	All blast events	15	0.04	0.34	0.16
SCH (EPA19)	Ground vibration	mm/s	All blast events	15	0.02	0.15	0.07
MRE (EPA12)	Ground vibration	mm/s	All blast events	15	0.26	2.17	0.89

Operator, for and on behalf of Bengalla Joint Venture, an unincorporated joint venture between:  
Harcove Pty Ltd, Wesfarmers Bengalla Limited, Taipower Bengalla Pty Limited & Mitsui Bengalla Investment Pty Limited.

[www.bengalla.com.au](http://www.bengalla.com.au)

# **Appendix A**

## **EPL 6538 Particulate Matter Monitoring Locations**



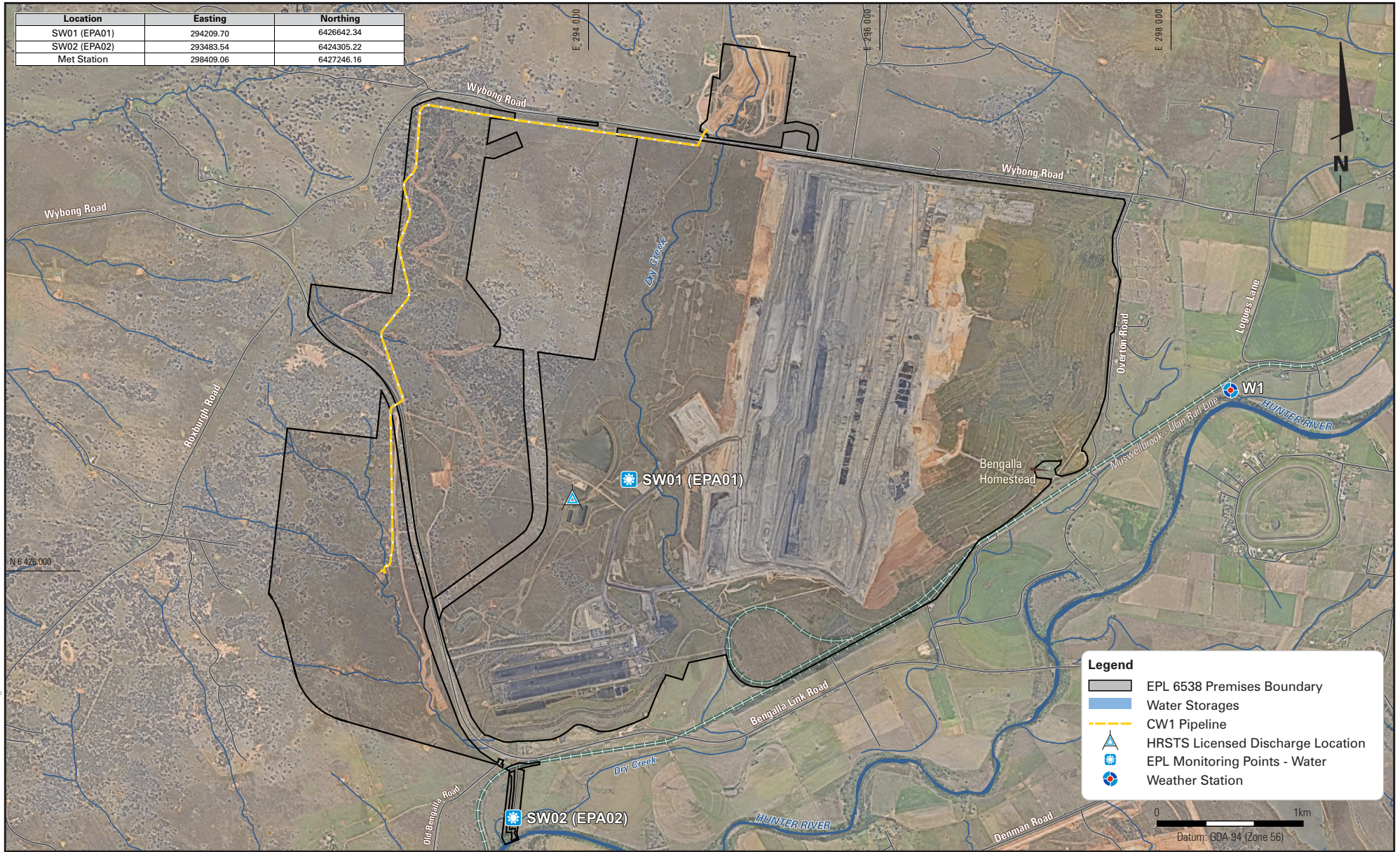
BENGALLA MINE



## **Appendix B**

### **EPL 6538 Surface Water Monitoring Locations**

Location	Easting	Northing
SW01 (EPA01)	294209.70	6426642.34
SW02 (EPA02)	293483.54	6424305.22
Met Station	298409.06	6427246.16



HB BENGALLA 1642 F1 EPL Monitoring Points - Water 21 06 2017 Rev E

N 6 426 000

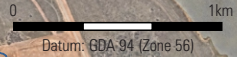
E 294 000

E 296 000

E 298 000

**Legend**

- EPL 6538 Premises Boundary
- Water Storages
- CW1 Pipeline
- HRSTS Licensed Discharge Location
- EPL Monitoring Points - Water
- Weather Station



BENGALLA MINE



HansenBailey  
ENVIRONMENTAL CONSULTANTS

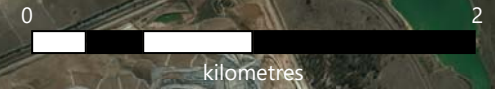
EPL 6538 Discharge Monitoring Locations

Location	Easting	Northing
EPA25	294,016	6,425,174



**Legend**

- Project Boundary
- Disturbance Boundary
- Effluent quality monitoring point



PR\J33286\_BengallaMineNSW\_50cm\_25072018\_gda94mga56\_ortho\_full-area



BENGALLA MINE

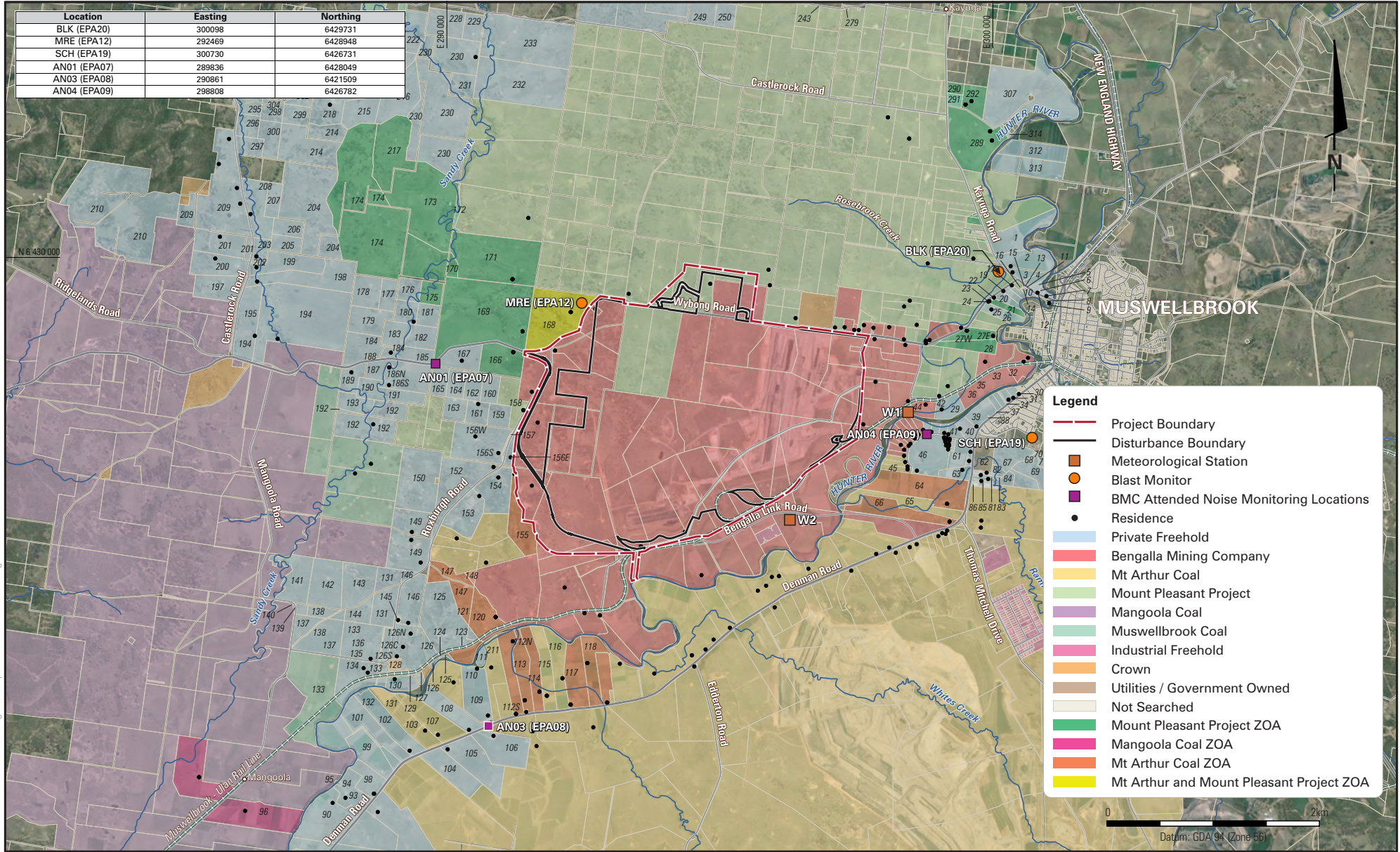
EPL 6538 Effluent Quality Monitoring Location



## **Appendix C**

### **EPL 6538 Noise and Blast Monitoring Locations**

Location	Easting	Northing
BLK (EPA20)	300098	6429731
MRE (EPA12)	292469	6428948
SCH (EPA19)	300730	6426731
AN01 (EPA07)	289836	6428049
AN03 (EPA08)	290861	6421509
AN04 (EPA09)	298808	6426782



HB BENGALLA EPL 1428 F1 Bengalla Compliance Acoustic Monitoring Network - Aerial Version 09 09 2016



BENGALLA MINE

EPL 6538 Noise & Blast Monitoring Locations