



Bengalla Mining Company Pty Limited  
A.B.N. 32 053 909 470

Bengalla Road, Muswellbrook  
Locked Mail Bag 5, Muswellbrook NSW 2333 Australia



## **Bengalla Mine**

# **Environment Protection Licence 6538 Monthly Monitoring Data Summary**

## **May 2015**

---

Operator, for and on behalf of the Bengalla Joint Venture, an unincorporated joint venture between:

CNA Bengalla Investments Pty Limited, Wesfarmers Bengalla Limited, Taipower Bengalla Pty Limited and Mitsui Bengalla Investments Pty Ltd.

## Contents

1.	INTRODUCTION .....	1
2.	AIR QUALITY .....	2
2.1.	Total Suspended Particulates .....	2
2.2.	Particulate Matter less than 10 Microns .....	4
2.3.	Dust Deposition .....	6
3.	SURFACE WATER .....	9
3.1.	Mine Water Discharge .....	9
4.	BLASTING .....	13

## Tables

Table 1:	Total Suspended Particulates Monitoring Summary.....	3
Table 2:	PM <sub>10</sub> Monitoring Summary .....	5
Table 3:	Dust Deposition Monitoring Summary .....	7
Table 4:	Blast Monitoring Summary .....	14

## 1. INTRODUCTION

This document has been prepared to satisfy the requirements of Bengalla Mining Company Pty Limited's (BMC) Environment Protection Licence (EPL) 6538. The licence details are as follows:

License Holder:	Bengalla Mining Company Pty Limited
Licence Number:	6538
Premises:	Bengalla Mine Bengalla Road via Muswellbrook NSW 2333
Access to Licence:	<a href="http://www.epa.nsw.gov.au/prpoeoapp/Detail.aspx?instid=6538&amp;id=6538&amp;option=licence&amp;searchrange=licence&amp;range=POEOlicence&amp;prp=no&amp;status=Issued">http://www.epa.nsw.gov.au/prpoeoapp/Detail.aspx?instid=6538&amp;id=6538&amp;option=licence&amp;searchrange=licence&amp;range=POEOlicence&amp;prp=no&amp;status=Issued</a>
Monitoring Locations:	See main text and <b>Appendix A</b>

This document provides a summary of environmental monitoring data sampled as prescribed by EPL 6538 for May 2015 (reporting period). Monitoring data provided is as follows:

- Air quality, including total suspended particulates (TSP), particulate matter less than 10 microns (PM<sub>10</sub>) and deposited dust matter;
- Surface water, including mine water discharge; and
- Blast vibration and overpressure.

## 2. AIR QUALITY

In accordance with Condition M2.2 of EPL 6538 and to monitor regional air quality, Bengalla Mine operates and maintains a network of five high volume air samplers (HVAS) measuring TSP, three HVAS measuring PM<sub>10</sub> and 14 depositional dust gauges on land representative of private receivers surrounding its operations. Additional PM<sub>10</sub> data is also sourced from Mt Arthur Coal through an information sharing agreement. The air quality monitoring network, as described, is shown in **Appendix A**.

### 2.1. Total Suspended Particulates

<b>Pollutant</b>	TSP
<b>Unit of measure:</b>	Micrograms per cubic metre (µg/m <sup>3</sup> )
<b>Monitoring location:</b>	See <b>Table 1</b> and <b>Appendix A</b>
<b>Monitoring frequency required by licence:</b>	Every 6 days (24 hours)
<b>Sampled:</b>	29/04/15, 05/05/15, 11/05/15, 17/05/15, 23/05/15 External contractor sampling and reporting results for 29/04/2015 to be presented in this summary due to sample schedule.
<b>Obtained:</b>	11 June 2015
<b>Published:</b>	25 June 2015
<b>Development consent limit:</b>	Annual average 90 µg/m <sup>3</sup>

In accordance with Condition M2.2 of EPL 6538, TSP data (EPA Monitoring Point 3) for the reporting period is provided in **Table 1**.

**Table 1: Total Suspended Particulates Monitoring Summary**

Sampling point		No. of samples required by licence	No. of samples collected and analysed*	Minimum sample value	Maximum sample value	Monthly mean of samples	Annual rolling average
HV01	Wybong Road (East), Muswellbrook	5	5	14.8	36.1	27.4	54.1
HV02	Racecourse Road, Muswellbrook	5	5	30.6	60.7	40.1	63.6
HV03	Logues Lane, Muswellbrook	5	5	16.4	32.2	24.7	44.6
HV04	St James School, Muswellbrook	5	5	21.6	42.4	32.6	55.8
HV06	Wybong Road (West), Muswellbrook	5	5	18.9	87.8	47.5	73.7

\* External contractor sampling and reporting results for 29/04/2015 to be presented in this summary due to sample schedule.

For the reporting period, annual average TSP data were below the annual average Development Consent limit of 90  $\mu\text{g}/\text{m}^3$ .

---

Operator, for and on behalf of the Bengalla Joint Venture, an unincorporated joint venture between:

CNA Bengalla Investments Pty Limited, Wesfarmers Bengalla Limited, Taipower Bengalla Pty Limited and Mitsui Bengalla Investments Pty Ltd.

## 2.2. Particulate Matter less than 10 Microns

<b>Pollutant</b>	PM <sub>10</sub>
<b>Unit of measure:</b>	Micrograms per cubic metre (µg/m <sup>3</sup> )
<b>Monitoring location:</b>	See <b>Table 2</b> and <b>Appendix A</b>
<b>Monitoring frequency required by licence:</b>	Every 6 days (24 hours)
<b>Sampled:</b>	29/04/15, 05/05/15, 11/05/15, 17/05/15, 23/05/15 External contractor sampling and reporting results for 29/04/2015 to be presented in this summary due to sample schedule.
<b>Obtained:</b>	11 June 2015
<b>Published:</b>	25 June 2015
<b>Development consent limit:</b>	Annual average 30 µg/m <sup>3</sup> 24-hour average 50 µg/m <sup>3</sup>

In accordance with Condition M2.2 of EPL 6538, PM<sub>10</sub> data (EPA Monitoring Point 4) for the reporting period is provided in **Table 2**.

**Table 2: PM<sub>10</sub> Monitoring Summary**

Sampling point		No. of samples required by licence	No. of samples collected and analysed*	Minimum sample value	Maximum sample value	Monthly mean of sample	Annual rolling average
PM <sub>10</sub> - 1	Racecourse Road, Muswellbrook	5	5	8.5	17.5	13.7	22.3
PM <sub>10</sub> - 2	St James School, Muswellbrook	5	5	7.6	16.2	13.5	21.3
PM <sub>10</sub> - 3	Mt Arthur Coal Residence, Muswellbrook †	5	5	7.0	23.0	13.8	21.8
PM <sub>10</sub> - 4	Wybong Road (West), Muswellbrook	5	5	7.4	26.5	14.5	23.5

\* External contractor sampling and reporting results for 29/04/2015 to be presented in this summary due to sample schedule.

† Data sourced from Mt Arthur Coal

For the reporting period, annual average PM<sub>10</sub> data were below the Development Consent limit of 30 µg/m<sup>3</sup>.

### 2.3. Dust Deposition

<b>Pollutant</b>	Particulates – deposited matter
<b>Unit of measure:</b>	Grams per square metre per month (g/m <sup>2</sup> /month)
<b>Monitoring location:</b>	See <b>Table 3</b> and <b>Appendix A</b>
<b>Monitoring frequency required by licence:</b>	Once a month (minimum of 4 weeks)
<b>Sampling period:</b>	24 April 2015 – 25 May 2015
<b>Obtained:</b>	11 June 2015
<b>Published:</b>	25 June 2015
<b>Development consent limit:</b>	Annual average 4 g/m <sup>2</sup> /month

---

Operator, for and on behalf of the Bengalla Joint Venture, an unincorporated joint venture between:

CNA Bengalla Investments Pty Limited, Wesfarmers Bengalla Limited, Taipower Bengalla Pty Limited and Mitsui Bengalla Investments Pty Ltd.



In accordance with Condition M2.2 of EPL 6538, dust deposition data (EPA Monitoring Point 5) is provided in **Table 3**.

**Table 3: Dust Deposition Monitoring Summary**

Sampling point		No. of samples required by licence	No. of samples collected and analysed	Measured value	Observations	Annual rolling average
D01	Queen Street, Muswellbrook	1	1	0.5		1.1
D02	King Street, Muswellbrook	1	1	0.8		1.5
D04A	Industrial Estate, Muswellbrook	1	1	2.1		2.3
D05	Intersection Kayuga and Wybong Road, Muswellbrook	1	1	0.8		1.3
D06	Logues Lane, Muswellbrook	1	1	0.7		2.6
D07A	St James School, Muswellbrook	1	1	1.8		1.8
D08	Denman Road, Muswellbrook	1	1	1.6		1.6
D09	Wybong Road, Muswellbrook	1	1	0.9		1.4
D10	Racecourse Road, Muswellbrook	1	1	1.2		2.4
D20	Wyndams Arms R.O.W., Muswellbrook	1	1	2.5		3.7
D23B	Logues Lane, Muswellbrook	1	1	1.2		1.9
D25	Roxburgh Road, Muswellbrook	1	1	2.8		3.2
D26	Wybong Road, Muswellbrook	1	1	1.5		2.4
DA	Roxburgh Road, Muswellbrook	1	1	4.2c	Light brown & slightly turbid. Contains insects and bird droppings. Low ash ratio 43%. Deemed contaminated.	3.8

Operator, for and on behalf of the Bengalla Joint Venture, an unincorporated joint venture between:

CNA Bengalla Investments Pty Limited, Wesfarmers Bengalla Limited, Taipower Bengalla Pty Limited and Mitsui Bengalla Investments Pty Ltd.

(c) Sample contaminated. Results for contaminated gauges are not included in the calculation of the annual averages. Note: D22 awaiting relocation.

- Sample unable to be collected.

Dust deposition samples can be contaminated by a variety of means, notably by the presence of insects and bird droppings. Results for contaminated gauges are not included in the calculation of the annual averages for the reporting period.

The Australian Standard does not provide criteria for the determination of contamination of a dust deposition sample. In this regard, a dust deposition sample is determined to be contaminated if it meets at least three of the following criteria:

1. Contents – gauge contains organic matter or bird droppings;
2. Water colour/turbidity – gauge water is coloured and turbid;
3. Ash to insoluble ratio – <50% or <70% for gauges within close proximity to mining operations; or
4. ARA comparison – insoluble result is higher than the annual rolling average.

For the reporting period, annual average dust deposition data were below the annual average Development Consent limit of 4 g/m<sup>2</sup>/month.

### 3. SURFACE WATER

#### 3.1. Mine Water Discharge

Bengalla Mine participates in the Hunter River Salinity Trading Scheme (HRSTS). In accordance with Condition P1, M2.3 and M7 of EPL6538, Bengalla Mine maintains two monitoring locations to measure concentration, volume and mass of mine water discharges.

The location of these monitoring points is provided in **Appendix A**.

<b>Pollutant</b>	Mine water
<b>Unit of measure:</b>	Megalitres per day (ML/day)
<b>Volume/mass limit: (Condition L3)</b>	200 ML/day
<b>Monitoring location:</b>	EPA Monitoring Identification Point 1 (EPA01) – Outlet pipe from 280ML HRSTS storage dam See <b>Appendix A</b>
<b>Monitoring frequency required by licence:</b>	Continuous during all discharge events
<b>Sampling period:</b>	Not applicable. During the reporting period, Bengalla Mine did not discharge any mine water under the HRSTS.
<b>Obtained:</b>	Not applicable
<b>Published:</b>	25 June 2015

---

Operator, for and on behalf of the Bengalla Joint Venture, an unincorporated joint venture between:

CNA Bengalla Investments Pty Limited, Wesfarmers Bengalla Limited, Taipower Bengalla Pty Limited and Mitsui Bengalla Investments Pty Ltd.

<b>Pollutant</b>	Conductivity
<b>Unit of measure:</b>	Microsiemens per centimetre ( $\mu\text{S}/\text{cm}$ )
<b>Monitoring location:</b>	EPA Monitoring Identification Point 1 (EPA01) – Outlet pipe from 280ML HRSTS storage dam EPA Monitoring Identification Point 2 (EPA02) – Downstream of Discharge Point 1 in Dry Creek See <b>Appendix A</b>
<b>Monitoring frequency required by licence:</b>	Continuous during all discharge events
<b>Sampling period:</b>	Not applicable. During the reporting period, Bengalla Mine did not discharge any mine water under the HRSTS.
<b>Obtained:</b>	Not applicable
<b>Published:</b>	25 June 2015

<b>Pollutant</b>	pH
<b>Unit of measure:</b>	pH
<b>pH limit: (Condition L2)</b>	6.5 – 9.5 (100 <sup>th</sup> percentile)
<b>Monitoring location:</b>	EPA Monitoring Identification Point 1 (EPA01) – Outlet pipe from 280ML HRSTS storage dam EPA Monitoring Identification Point 2 (EPA02) – Downstream of Discharge Point 1 in Dry Creek See <b>Appendix A</b>
<b>Monitoring frequency required by licence:</b>	Daily during all discharge events
<b>Sampling period:</b>	Not applicable. During the reporting period, Bengalla Mine did not discharge any mine water under the HRSTS.
<b>Obtained:</b>	Not applicable
<b>Published:</b>	25 June 2015

<b>Pollutant</b>	Total suspended solids (TSS)
<b>Unit of measure:</b>	Milligrams per litre (mg/L)
<b>Total suspended solids limit: (Condition L2)</b>	120 mg/L (100 <sup>th</sup> percentile)
<b>Monitoring location:</b>	EPA Monitoring Identification Point 1 (EPA01) – Outlet pipe from 280ML HRSTS storage dam EPA Monitoring Identification Point 2 (EPA02) – Downstream of Discharge Point 1 in Dry Creek See <b>Appendix A</b>
<b>Monitoring frequency required by licence:</b>	Daily during all discharge events
<b>Sampling period:</b>	Not applicable. During the reporting period, Bengalla Mine did not discharge any mine water under the HRSTS.
<b>Obtained:</b>	Not applicable
<b>Published:</b>	25 June 2015

#### 4. BLASTING

In accordance with the requirements of Condition M8 of EPL 6538, Bengalla Mine maintains a network of three blast monitors on private (non-mine owned) land to measure air-blast overpressure and ground vibration for all blasts events undertaken by the operation. The location of these monitors is provided in **Appendix A**.

**Overpressure limits:** a) 115 linear decibels (dB(L)) for more than 5% of the total number of blasts carried out on the premises within the 12 months annual reporting period; and  
**(Condition L4)** b) 120 dB(L) at any time

**Ground vibration limits:** a) exceed 5 millimetres/second (mm/s) for more than 5% of the total number of blasts carried out on the premises within the 12 months annual reporting period; and  
**(Condition L4)** b) 10mm/s at any time

**Sampled:** 1 – 31 May 2015

**Obtained:** 1 – 31 May 2015

**Published:** 25 June 2015

In accordance with Condition M8 of EPL 6538, overpressure and ground vibration data is provided in **Table 4**.

**Table 4: Blast Monitoring Summary**

Sampling point	Pollutant	Unit of measure	No. of samples required by licence	No. of samples collected and analysed	Minimum value	Maximum value	Mean of samples
Blake	Overpressure	dB(L)	All blast events	11	82.00	105.10	96.47
	Ground vibration	mm/s	All blast events	11	0.03	0.39	0.17
St James School	Overpressure	dB(L)	All blast events	11	83.90	103.30	95.71
	Ground vibration	mm/s	All blast events	11	0.02	0.17	0.07
Moore	Overpressure	dB(L)	All blast events	11	81.70	111.90	100.85
	Ground vibration	mm/s	All blast events	11	0.07	1.99	0.69

For the reporting period, overpressure and ground vibration data were below the maximum limit and within the 5% allowance limit specified in Condition L4 of EPL 6538.

---

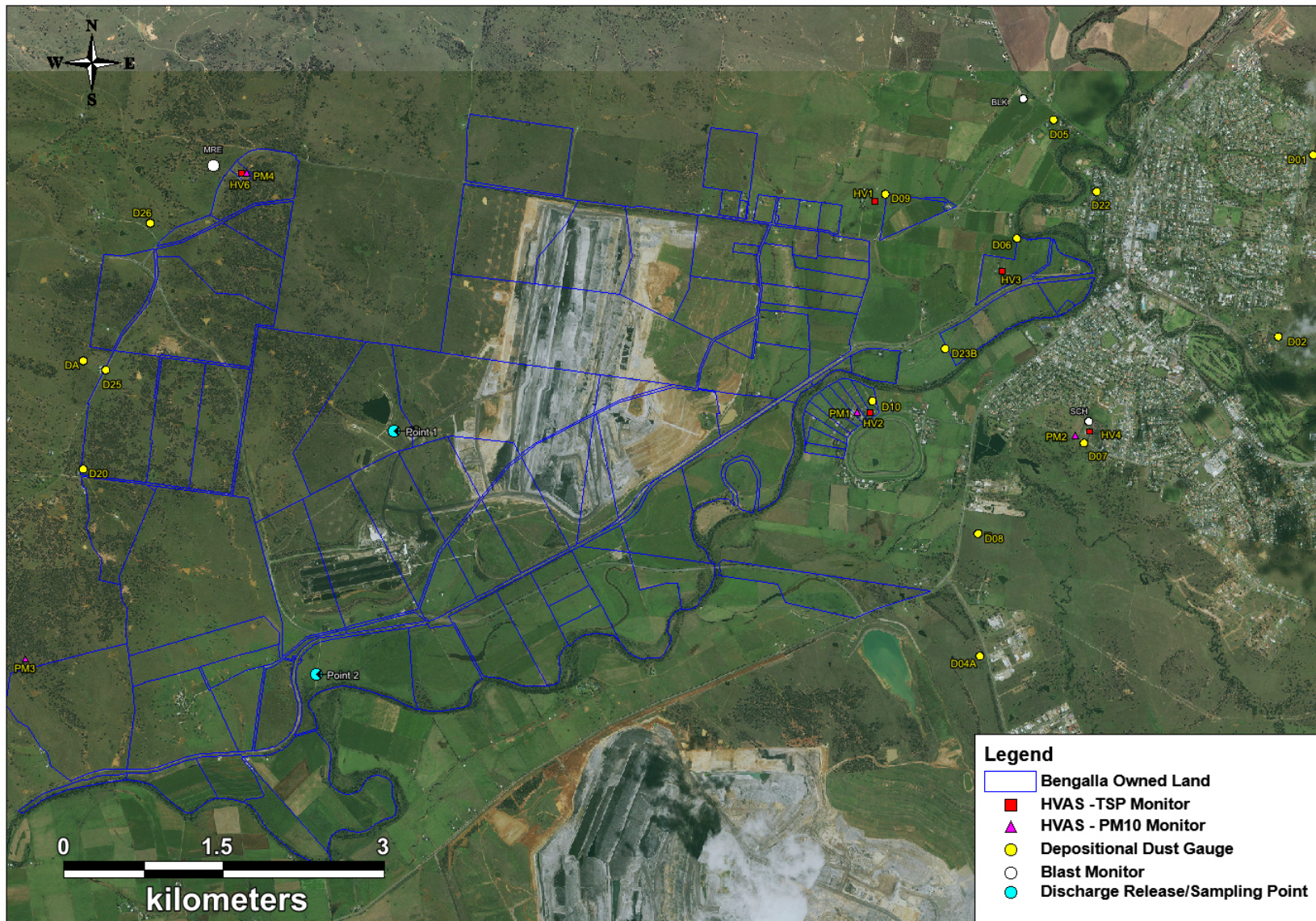
Operator, for and on behalf of the Bengalla Joint Venture, an unincorporated joint venture between:

CNA Bengalla Investments Pty Limited, Wesfarmers Bengalla Limited, Taipower Bengalla Pty Limited and Mitsui Bengalla Investments Pty Ltd.



# **Appendix A**

## **EPL 6538 Monitoring Locations**



**Figure 1: EPL 6538 Monitoring Locations**

Operator, for and on behalf of the Bengalla Joint Venture, an unincorporated joint venture between:

CNA Bengalla Investments Pty Limited, Wesfarmers Bengalla Limited, Taipower Bengalla Pty Limited and Mitsui Bengalla Investments Pty Ltd.